



**WE CAN**  
Help Improve Lives

**ESTEEM™  portfolio**



*One-Piece Convexity*

The Purpose of Convexity

All bodies are different. Convex wafers are designed to help manage irregular stomas and abdomens to help reduce leakage and simplify stoma management.

- Convexity is the outward curving of the baseplate or skin barrier.<sup>1,2</sup>
- Convexity applies a uniform pressure to the immediate peristomal skin, improving the projection of the stoma for drainage.<sup>3</sup>
- Convexity helps maintain a secure seal between the pouch and the skin.<sup>4</sup>

The Esteem™+ one-piece convex portfolio offers a range of products designed to address different stoma shapes and sizes. Offerings includes soft and firm convexity, various depths, and help provide comfort, freedom, security and reassurance.

SKIN BARRIER TYPES



Flat - skin barrier is flat against the skin.



Convex - outward curving of the skin barrier towards the skin.<sup>1, 2</sup>

When to Use Convexity



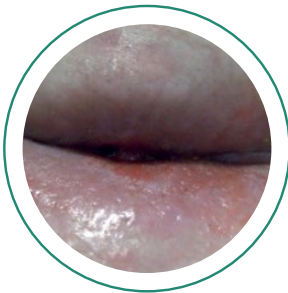
Flush Stomas

Located at the same level as the abdomen skin surface, and does not protrude<sup>5</sup>



Retracted Stomas

Stoma pulled into the abdomen below skin level or having little or no spout<sup>6</sup>



Skin Folds

A stoma which is deep in a skin fold/crease<sup>7</sup>

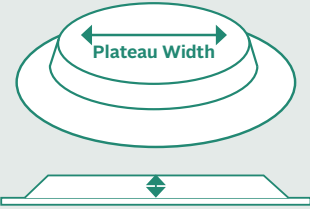


Soft or Flaccid Abdomens

An abdomen requiring firm level of support to stabilize the pouching system<sup>5</sup>

Why Plateau Width Matters

Successful convexity must press down on the peristomal skin enough to make a good seal around the base of the stoma and help with protrusion.<sup>7</sup>



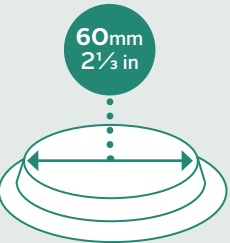
Convexity Depth Measurement

Convexity Pressure

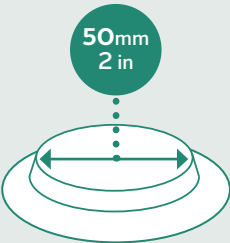
A narrow plateau width may be used to create pressure directly around the stoma with lesser pressure as the plateau width gets wider.

Plateau Width

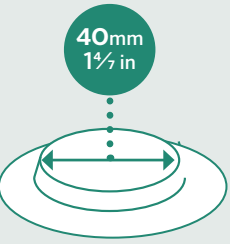
A wider plateau width may be used to flatten out skin creases away from the stoma.



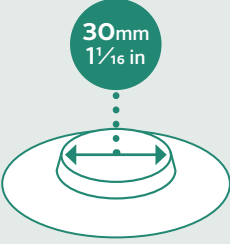
V0 Plateau Width



V1 Plateau Width



V2 Plateau Width



V3 Plateau Width

Esteem™+ Soft Convex

Available in Cut-to-Fit and Pre-Cut

Drainable & Urostomy Options

Convexity Depth = 4mm (1/8 in)

Key Benefits

- Shallow profile minimizes pressure and helps conform to the body
- Suitable for immediate post-operative use



Esteem™+ Flex Convex

Available in Cut-to-Fit and Pre-Cut

Drainable and Ursotomy Options

Convexity Depth = 7mm (2/8 in)

Key Benefits

- Combines the comfort and freedom of flexibility with the firmness of convexity



Esteem™+ (Firm) Convex

Available in Pre-Cut

Drainable Options

Convexity Depth = 5mm (3/16 in)

Key Benefits

- May be suitable for patients with soft, flaccid abdomens
- Encourages protrusion of flush or retracted stomas



REFERENCES: 1. Rolstad BS. Principles and techniques in the use of convexity. Ostomy Wound Manage. 1996; 42(1):24-32. 2. Pontieri, Lewis V. Basics of ostomy care. Medsurg Nurs. 2006; 15(4):199-202. 3. Hanley J. Convex stoma appliances: are we getting it right? British Journal of Nursing (Stoma Supplement). 2013; 22 (16). 4. Cronin E. A guide to the appropriate use of convex stoma care products. Gastrointestinal nursing. 2008; 6 (2); 12-16. 5. Boyd, K. Clinical Protocols for Stoma Care - Use of convex appliances. Nursing Standard. 2004; 18(20): 37-38. 6. Burch, 2011; Management of Stoma Complications, Nursing Times.net, 10 Nov 2011. 7. Turnbull GB. The convexity controversy. Ostomy Wound Manage. 2003; 49(1):16-17. www.o-wm.com/article/1203 Accessed 29 February, 2016.



## Esteem™ + Soft Convex



### Drainable | Cut-to-Fit

Product Code	Plateau Size	Cutting Range	Quantity
422363	V1	20-47mm (¾ - 1⅞ in)	10
422364	V2	15-40mm (⅝ - 1⅝ in)	10
422365	V3	10-28mm (⅜ - 1⅞ in)	10



### Drainable | Pre-Cut

Product Code	Plateau Size	Hole Diameter	Quantity
422539	V1	25mm (1 in)	10
422540	V1	30mm (1 ⅛ in)	10
422541	V1	35mm (1 ⅜ in)	10
422545	V2	25mm (1 in)	10
422546	V2	30mm (1 ⅛ in)	10



### Urostomy | Cut-to-Fit

Product Code	Plateau Size	Cutting Range	Quantity
422551	V1	20-47mm (¾ - 1⅞ in)	10
422557	V2	15-40mm (⅝ - 1⅝ in)	10
422562	V3	10-28mm (⅜ - 1⅞ in)	10



### Urostomy | Pre-Cut

Product Code	Plateau Size	Hole Diameter	Quantity
422552	V1	25mm (1 in)	10
422553	V1	30mm (1 ⅛ in)	10
422558	V2	20mm (⅝ in)	10
422559	V2	25mm (1 in)	10
422560	V2	30mm (1 ⅛ in)	10
422564	V3	20mm (⅝ in)	10
422565	V3	25mm (1 in)	10

## Esteem™ + Flex Convex



### Drainable | Cut-to-Fit

Product Code	Plateau Size	Cutting Range	Quantity
422159	VO	20-57mm (¾ - 2⅝ in)	10
421615	V1	20-43mm (¾ - 1⅝ in)	10
421619	V2	20-35mm (¾ - 1⅝ in)	10
421622	V3	20-25mm (¾ - 1 in)	10



### Drainable | Pre-Cut

Product Code	Plateau Size	Hole Diameter	Quantity
421616	V1	25mm (1 in)	10
421617	V1	30mm (1⅛ in)	10
421618	V1	35mm (1⅜ in)	10
421620	V2	25mm (1 in)	10
421621	V2	30mm (1⅛ in)	10



### Urostomy | Cut-to-Fit

Product Code	Plateau Size	Cutting Range	Quantity
421623	V1	10-43mm (⅜ - 1⅝ in)	10
421626	V2	10-35mm (⅜ - 1⅝ in)	10
421628	V3	10-25mm (⅜ - 1 in)	10



### Urostomy | Pre-Cut

Product Code	Plateau Size	Hole Diameter	Quantity
421624	V1	15mm (⅝ in)	10
421625	V1	20mm (⅝ in)	10
421627	V2	15mm (⅝ in)	10
421629	V3	15mm (⅝ in)	10

## Esteem™ + (Firm) Convex



### Drainable | Pre-Cut (Transparent)

Product Code	Hole Diameter	Quantity
416738	19mm (¾ in)	10
416740	22mm (⅞ in)	10
416742	25mm (1 in)	10
416744	28mm (1⅛ in)	10
416746	32mm (1¼ in)	10
416748	35mm (1⅝ in)	10
416750	38mm (1½ in)	10



### Drainable | Pre-Cut (Opaque)

Product Code	Hole Diameter	Quantity
416739	19mm (¾ in)	10
416741	22mm (⅞ in)	10
416743	25mm (1 in)	10
416745	28mm (1⅛ in)	10
416747	32mm (1¼ in)	10
416749	35mm (1⅝ in)	10
416751	38mm (1½ in)	10



Enrolling your patients is simple. Contact your me+™ concierge at 1-877-585-0470 or visit [mepluscare.com](https://mepluscare.com)



ConvaTec

Ostomy Care