



FoamLite[™]
ConvaTec

Skin's Guardians

**Protect.
Defend.
Nurture.**



A light, soft-touch foam dressing
for low to non-exuding wounds



Light and flexible every day

Designed specifically for the management of low to non-exuding chronic and acute wounds. FoamLite™ ConvaTec dressing is a thin Foam dressing with a breathable film and perforated, gentle, skin friendly silicone adhesive.^{†1} FoamLite™ ConvaTec dressing is flexible and conforms^{†1} to the body even in awkward to dress positions.



Flexible and conformable^{†1}



Viral and bacterial barrier^{†1}



Can be cut to shape*



Soft, gentle and light



Adhesive does not stick to gloves or itself[†]



Maximum recommended wear time 7 days*



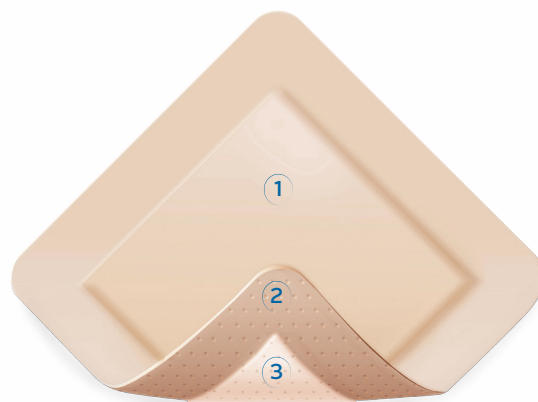
Easy to apply, reposition and remove^{†1, 2}



Water/shower proof^{†1}

Three synergistic layers

- ① Soft-to-touch protective barrier against water bacteria and viruses[†]
- ② Perforated, gentle, skin-friendly silicone adhesive, easy to apply, re-position¹ and atraumatic to the wound and periwound skin upon removal^{†2}
- ③ Thin, flexible, soft Foam layer designed to absorb low exudate levels and helping maintain a moist wound healing environment^{†1}



FoamLite™ ConvaTec dressings for your day-to-day needs – ready to protect, defend and nurture low to non-exuding wounds.

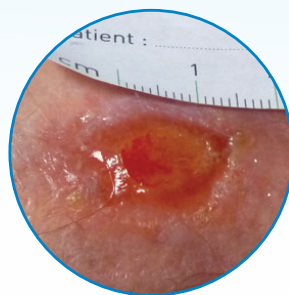
Light and versatile



Skin tear**

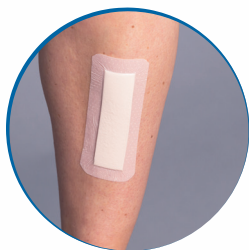


Skin abrasion**



Partial Thickness
Burn*

Soft and conformable†1



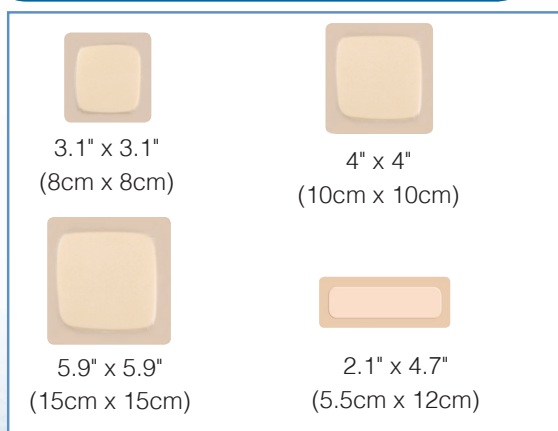
Skin's Guardians
PROTECT. DEFEND. NURTURE

**All photographs reproduced with permission: skin abrasion – C Espinosa IDE (Toulouse); Post-surgical incision - ConvaTec image library; Skin tear – F Jullien IDE (Nice)



FoamLite™ ConvaTec dressing, for the management of low to non-exuding wounds.

Adhesive



Dressing Size	Pack Size	Product SKU
3.1" x 3.1" (8cm x 8cm)	10	421557
4" x 4" (10cm x 10cm)	10	421559
5.9" x 5.9" (15cm x 15cm)	10	421561
2.1" x 4.7" (5.5cm x 12cm)	10	421563



The ConvaTec Foam dressing family – dedicated to your everyday needs.

To learn more about ConvaTec Foam dressings or to arrange a visit from your ConvaTec representative

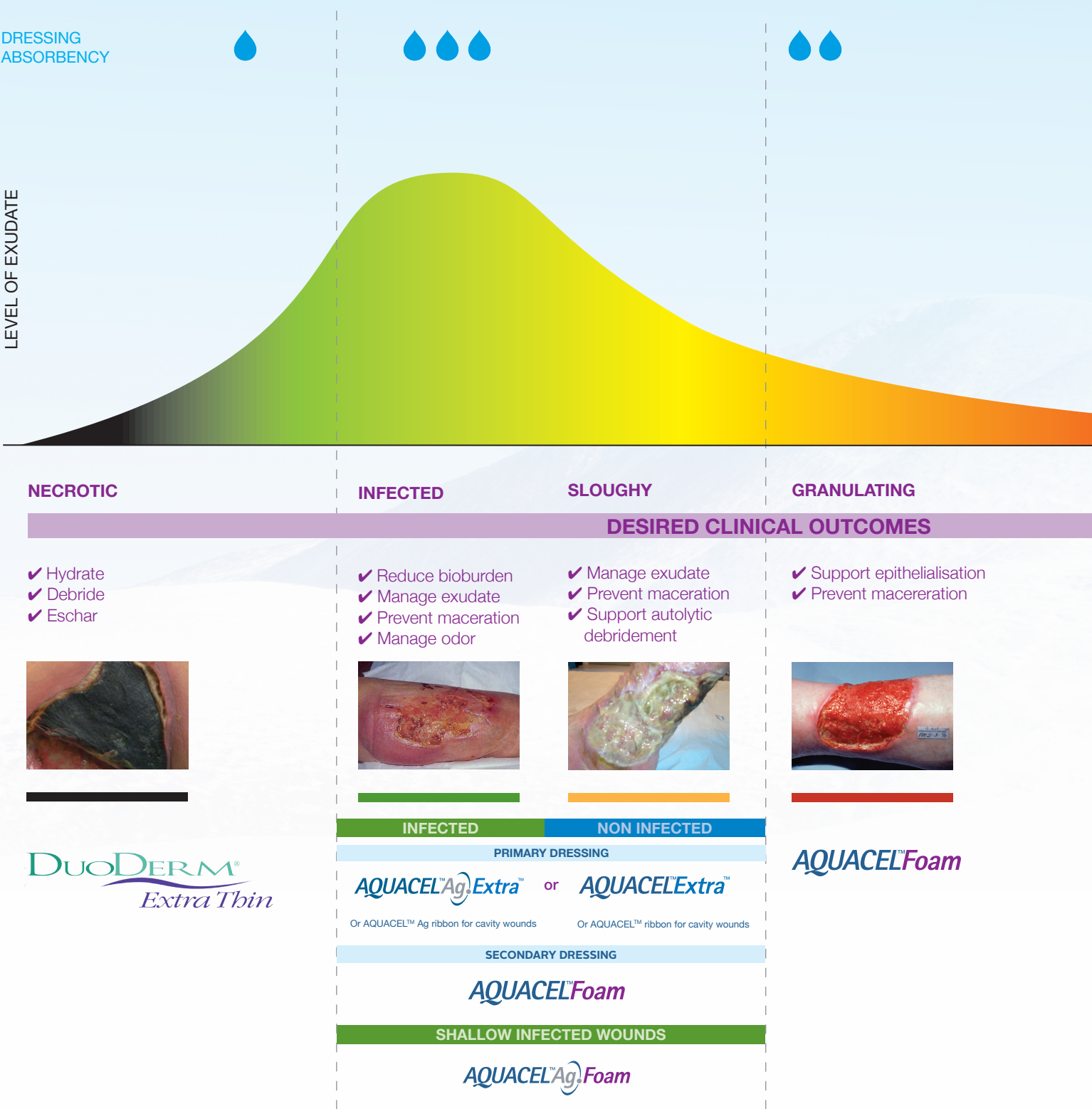
please call 1-800-422-8811 or visit www.convatec.com

1. In Vitro Performance Characteristics of Foam Lite ConvaTec WHRI 4680 MS132. 25/04/16 Data on File, ConvaTec Inc. 2. Meuleneire F, Rücknagel H. Soft silicones Made Easy. Wounds International 2013 (May). Available from: www.woundsinternational.com 3. World Union of Wound Healing Societies (WUWHS). Principles of best practice: Wound exudate and the role of dressings. A consensus document. London: MEP Ltd; 2007. <http://www.woundsinternational.com/clinical-guidelines/wound-exudate-and-the-role-of-dressings-a-consensus-document/page-1>. Accessed November 2013

©/™ indicates a trademark of ConvaTec Inc. ConvaTec Ltd is an authorised user. © ConvaTec Inc. 2016. AP-017256-US



Wound dressings designed for any type of exudate level





Finding the right balance

Exudate assists healing:³

- Prevents wound bed from drying out
- Aids migration of tissue-repairing cells
- Provides essential nutrients for cell metabolism
- Assists separation of dead or damaged tissue (autolysis).

Excess exudate may:³

- Cause maceration of surrounding tissue
- Delay or prevent wound healing
- Cause subsequent breakdown and further deterioration of the wound bed

EPITHELIALISING

- ✓ Help protect wound and peri-wound skin
- ✓ Help maintain moist wound healing environment

