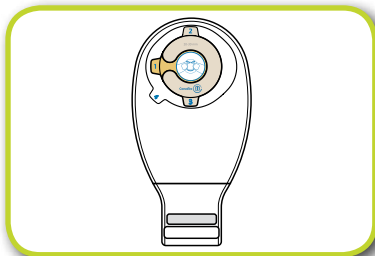
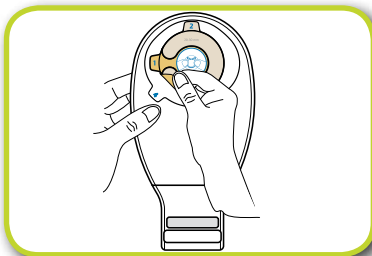


# Esteem® One-Piece Pouch with ConvaTec Mouldable Technology™

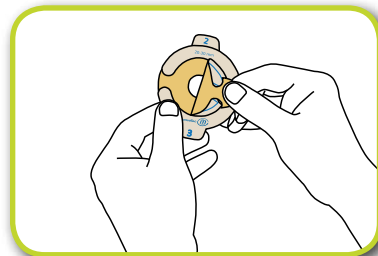
## 1 Mouldable Disc application



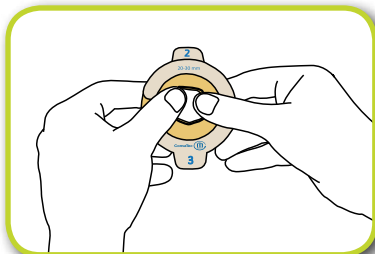
Mouldable disc & pouch come attached.



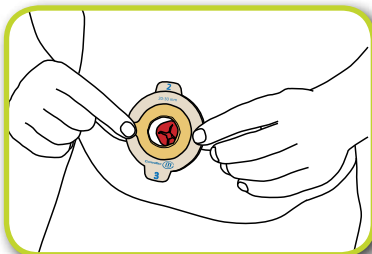
Remove mouldable disc from the pouch.



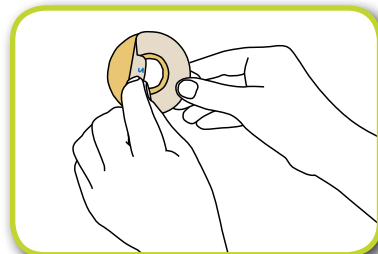
Remove liner marked #1. This is the moulding side.



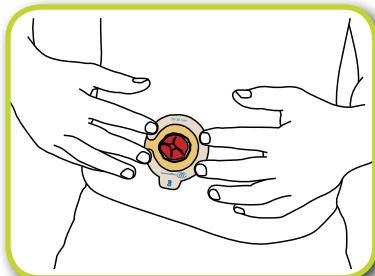
Roll and mould the disc to the size of the stoma. **Do not stretch, pull or cut.** Pinch into place once desired size is reached.



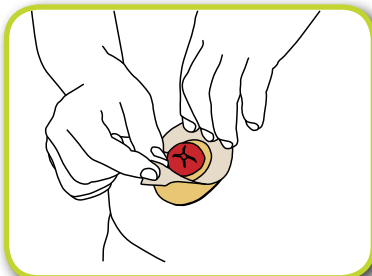
Check the size of the moulding.



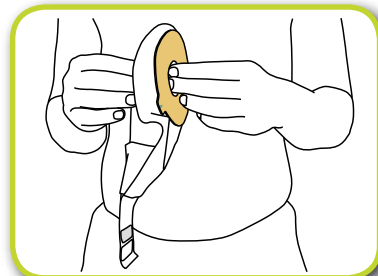
Remove liner marked #2. This side will go on the skin.



Place the disk on the body. Push the roll of adhesive toward the stoma to ensure a close fit. Skin should be clean and dry.

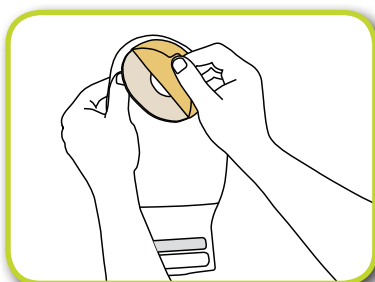


Remove liner marked #3.

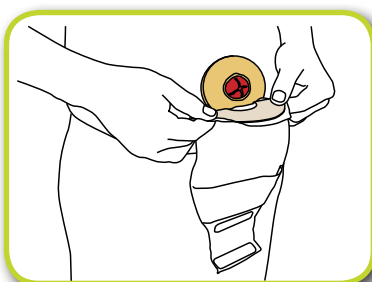


Separate the sides of the pouch to allow some air to enter the pouch.

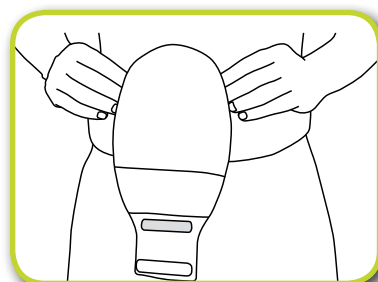
## 2 Applying pouch to the Mouldable Disc



Remove pouch release liner.



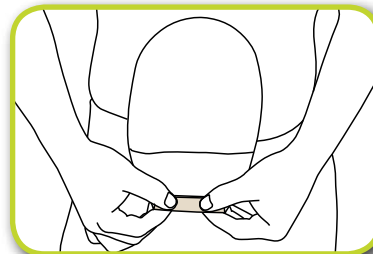
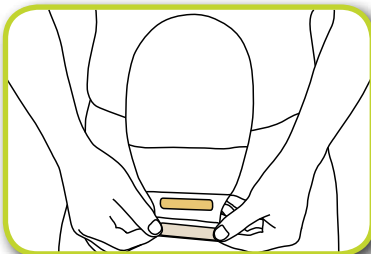
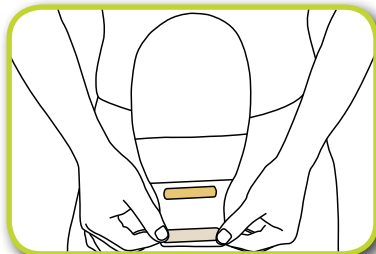
Place pouch on the mouldable disc



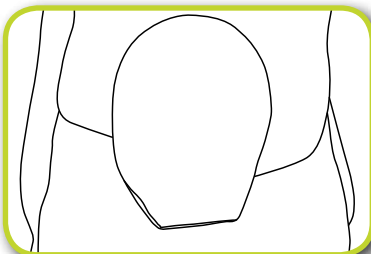
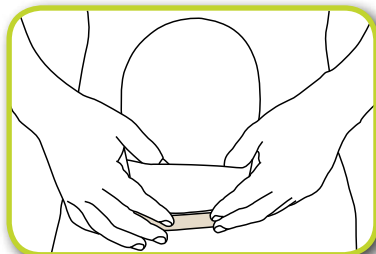
Smooth/hold skin barrier in place for about 30 seconds.

# Esteem® One-Piece Pouch with ConvaTec Mouldable Technology™

## 3 InvisiClose™ Tail Closure

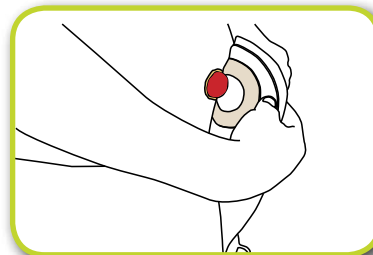
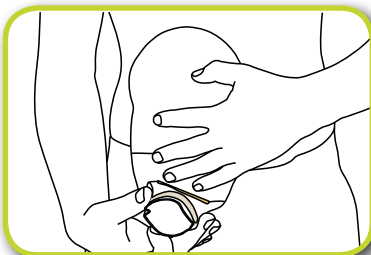
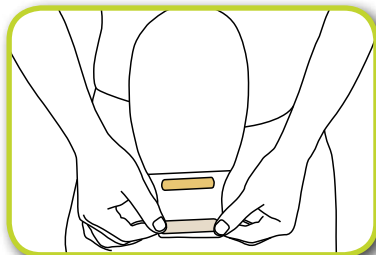


To close the pouch, fold the end up towards you 3 times until interlocking closures line up. Keep a small amount of air in the pouch. Press and pinch across the entire closure to secure.



For added discretion, turn the Lock-it-Pocket™ inside-out to hide tail inside.

## 4 Emptying and removing drainable pouch



To empty pouch, tilt tail up towards the body. Peel open the closure and unravel tail. For easier opening, push sides together.

When it's time to change pouch, (either drainable or closed-end) the disc and pouch can be removed as one.

### Notes:


Please call **1800 335 276** for further information or visit **[www.convatec.com.au](http://www.convatec.com.au)**

™ indicates trademarks of ConvaTec Inc. Esteem is a registered trademark in the U.S.

© 2014 ConvaTec Inc. AP-014407-MM September 2014 0440

ConvaTec (Australia) Pty Limited. ABN 70 131 232 570. PO Box 63, Mulgrave, VIC 3170. Phone: (03) 9239 2700 Facsimile: (03) 9239 2742.  
ConvaTec (New Zealand) Limited. AK2135265 PO Box 62663, Greenlane 1546 New Zealand. Phone: 0800 441 763. [www.convatec.com.au](http://www.convatec.com.au)

