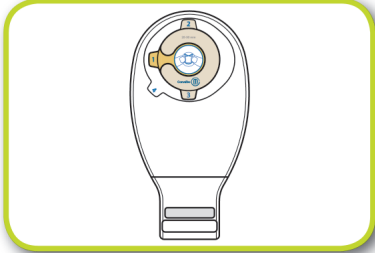
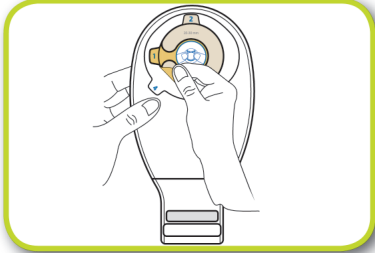


Esteem™ Pouch with ConvaTec Mouldable Technology™

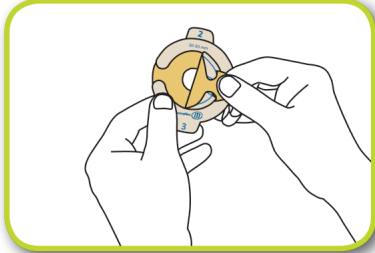
1 Mouldable Disc application



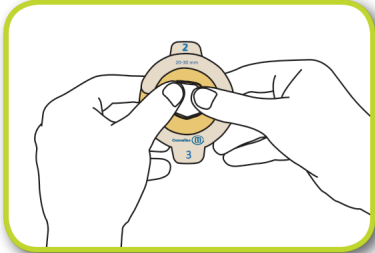
Mouldable disc & pouch come attached.



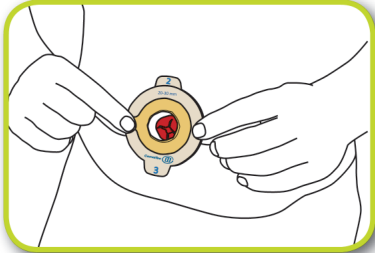
Remove mouldable disc from the pouch.



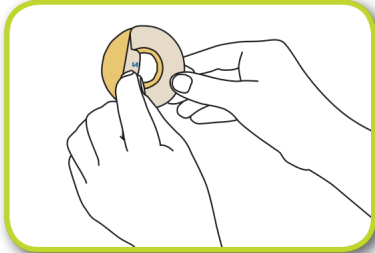
Remove liner marked #1. This is the moulding side.



Roll and mould the disc to the size of the stoma. **Do not stretch, pull or cut.** Pinch into place once desired size is reached.



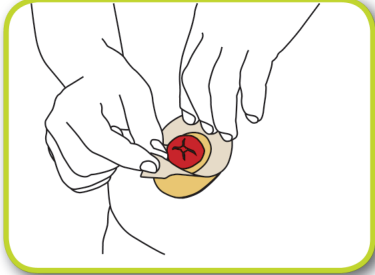
Check the size of the moulding.



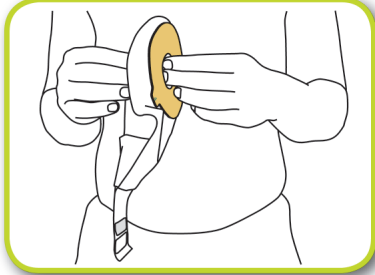
Remove liner marked #2. This side will go on the skin.



Place the disk on the body. Push the roll of adhesive toward the stoma to ensure a close fit. Skin should be clean and dry.

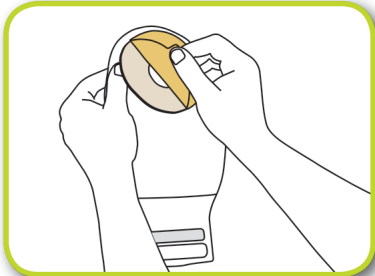


Remove liner marked #3.

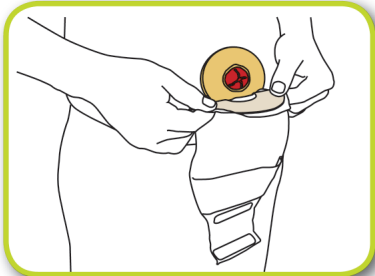


Separate the sides of the pouch to allow some air to enter the pouch.

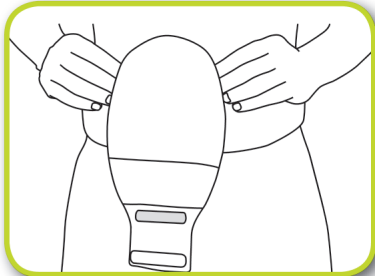
2 Applying pouch to the Mouldable Disc



Remove pouch release liner.



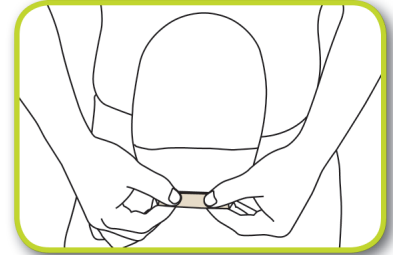
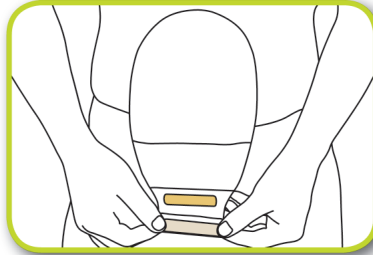
Place pouch on the mouldable disc



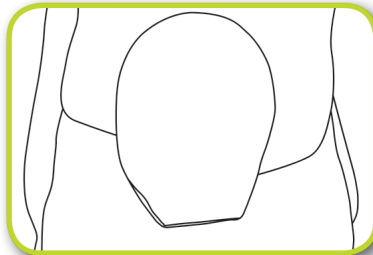
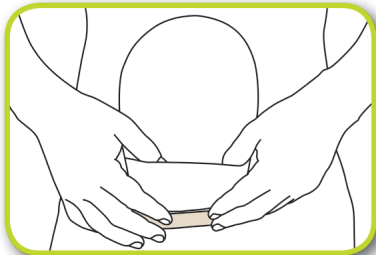
Smooth/hold skin barrier in place for about 30 seconds.

Esteem™ Pouch with ConvaTec Mouldable Technology™

3 InvisiClose™ Tail Closure

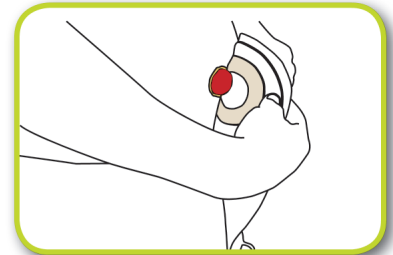
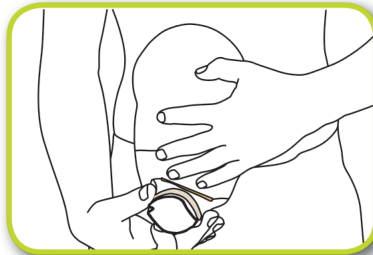
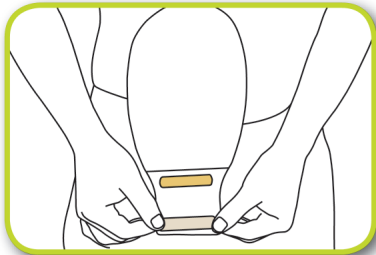


To close the pouch, fold the end up towards you 3 times until interlocking closures line up. Keep a small amount of air in the pouch. Press and pinch across the entire closure to secure.



For added discretion and comfort, turn the Lock-it-Pocket™ inside-out to hide tail inside.

4 Emptying and removing drainable pouch



To empty pouch, tilt tail up towards the body. Peel open the closure and unravel tail. For easier opening, push sides together.

When it's time to change pouch, (either drainable or closed-end) the disc and pouch will be removed as one.

Notes:

For more information call freephone UK: 0800 834 822 (ROI: 1 800 721 721)