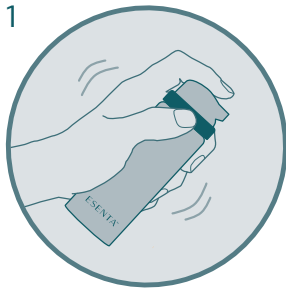


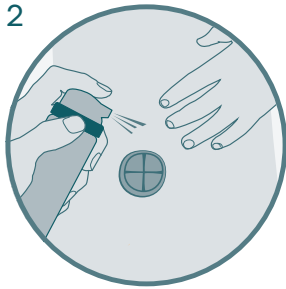
## ESENTA™ Sting Free Skin Barrier Spray

Easy to use: follow the below steps



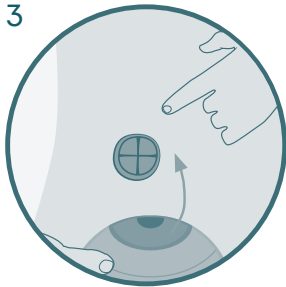
### Getting started

Shake well before use. Clean and dry the skin.



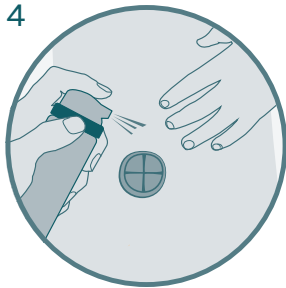
### Easy to apply

Hold approximately 10 cm or 4 inches from the area to be treated and apply a uniform coating in a sweeping motion.



### Check if the skin is dry

Ensure the area is completely dry before applying adhesive products such as ostomy appliances or dressings.



### Reapply

ESENTA™ Skin Barrier should be replaced at every dressing or appliance change to maintain complete protection. ESENTA™ skin barrier will not cause a build up of barrier film on the skin surface.

See package insert for complete instructions for use.

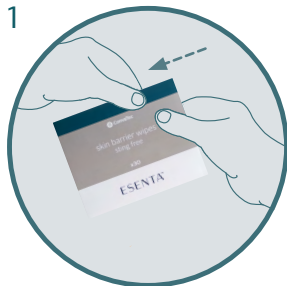
# ESENTA™



**convatec**  
— forever caring —

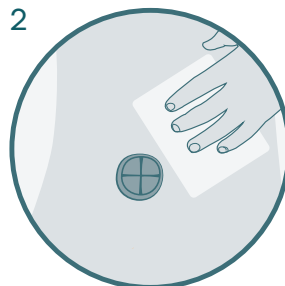
## ESENTA™ Sting Free Skin Barrier Wipes

Easy to use: follow the below steps



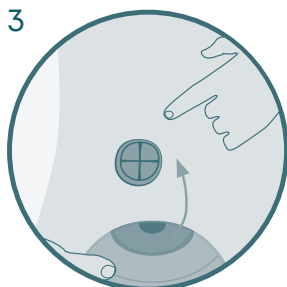
### Getting started

Clean and dry the skin. Tear sachet to open and unfold wipe.



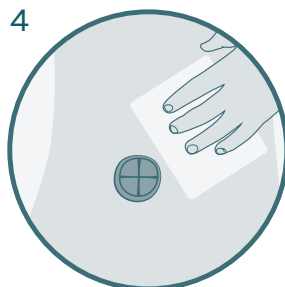
### Easy to apply

Gently wipe the area to be protected and wait until dry.



### Check if the skin is dry

Ensure the area is completely dry before applying adhesive products such as ostomy appliances or dressings.



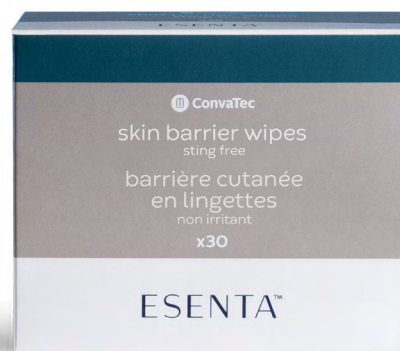
### Reapply

ESENTA™ skin barrier should be replaced at every dressing or appliance change to maintain complete protection. Reapplication is recommended every 12-72 hours, dependent upon skin surface conditions. ESENTA™ Barrier will not cause a build-up of barrier film on the skin surface.

For more information, please call our Customer Relations Center (Registered Nurses on staff) at 1-800-465-6302, Monday through Friday, 8:00 AM to 6:00 PM (EST), or visit our Web Site at [convatec.ca](http://convatec.ca)  
See package insert for complete instructions for use.

©2023 Convatec Inc. ®/™ all the trademarks are the property of Convatec group companies.  
AP-54646-CAN-ENG  
V1825EN

# ESENTA™



**convatec**  
— forever caring —