

Application guide*

Using Versiva[®] XC[™] Dressing plus AQUACEL[®] Dressing on shallow wounds

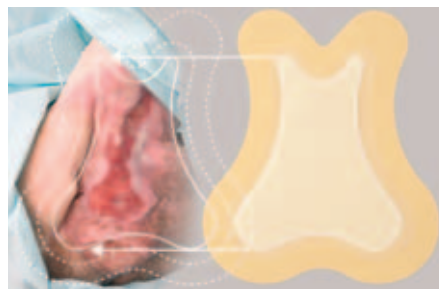
This guide is provided to assist health care professionals who are managing patients with shallow wounds with **Versiva[®] XC[™]** dressing, in combination with **AQUACEL[®]** dressing.

- If Versiva[®] XC[™] dressing is being used as a primary dressing, and large volumes of wound exudate are produced or there is an increase in exudate levels, it may be beneficial to use it in conjunction with AQUACEL[®] dressing to manage the exudate.
- Select a Versiva[®] XC[™] dressing size and shape that is suitable for the anatomical location of the wound, ensuring that it is large enough for the absorbent pad to cover the entire wound bed.
- When removing the dressings from their sterile packaging, minimise finger contact with the wound contact surface.

How to use Versiva[®] XC[™] Dressing in combination with AQUACEL[®] Dressing*



Ensure the wound and surrounding skin is clean. Cleanse with an appropriate wound care product and dry the area around the wound thoroughly.



Select the appropriate size of dressing, ensuring that the absorbent pad area comfortably covers the entire wound bed.



Place the AQUACEL[®] dressing onto the wound, with the centre of the dressing aligned to the centre of the wound.



As you begin to apply the Versiva[®] XC[™] dressing, line up the centre of the absorbent pad with the centre of the wound.



Adhesive dressings will affix to the surrounding skin. Secure Non-Adhesive dressings with an appropriate bandage or tape.



Versiva[®] XC[™] dressing and AQUACEL[®] dressing are designed to remain in place for up to 7 days. Monitor the wound and dressing closely in the first 7-10 days for increased exudate flow and change dressings as and when necessary.

*Please see package insert for full instructions for use.

Hints & tips for Versiva[®] XC[™] Dressing*

- **Choosing a dressing**
Ensure you select the dressing shape that is suitable for the anatomical location of the wound. For example square, sacral or heel.
- **Dressing pad size**
Select a dressing size and shape that is large enough for the absorbent pad to cover the entire wound bed.
- **Monitoring exudate flow**
Greater exudate flow may be experienced during the first 7-10 days after initial treatment of a wound with Versiva[®] XC[™] dressing. Dressings should be monitored closely and changed as often as necessary during this period. Dressings can be left on the wound for up to 7 days when the wound is closer to being healed.
- **Healing or maceration?**
It is important not to confuse new epithelial tissue growth with maceration when using Versiva[®] XC[™] dressing. A uniform white border at the inner wound margin is likely to be new tissue, rather than maceration, which usually presents as soggy tissue at the low point of the wound.

Versatile, effective wound care from ConvaTec

Versiva[®] XC[™] dressing is available in a range of formats, including Adhesive, Non-Adhesive, Adhesive Sacral and Adhesive Heel (shown right).

Versiva[®] XC[™] dressing can be cut to any shape or size without losing Hydrofiber[®] Technology performance.

For more information, support and procurement services please contact us.

0800 000 000

www.convatec.com

®/TM indicates trademarks of ConvaTec Inc.
©2009 ConvaTec Inc. AP-007036-MM



Heel application (Adhesive)



Leg application (Non-Adhesive)



Sacral application (Adhesive)



Cut to shape for toe application (Non-Adhesive)

*Please see package insert for full instructions for use.