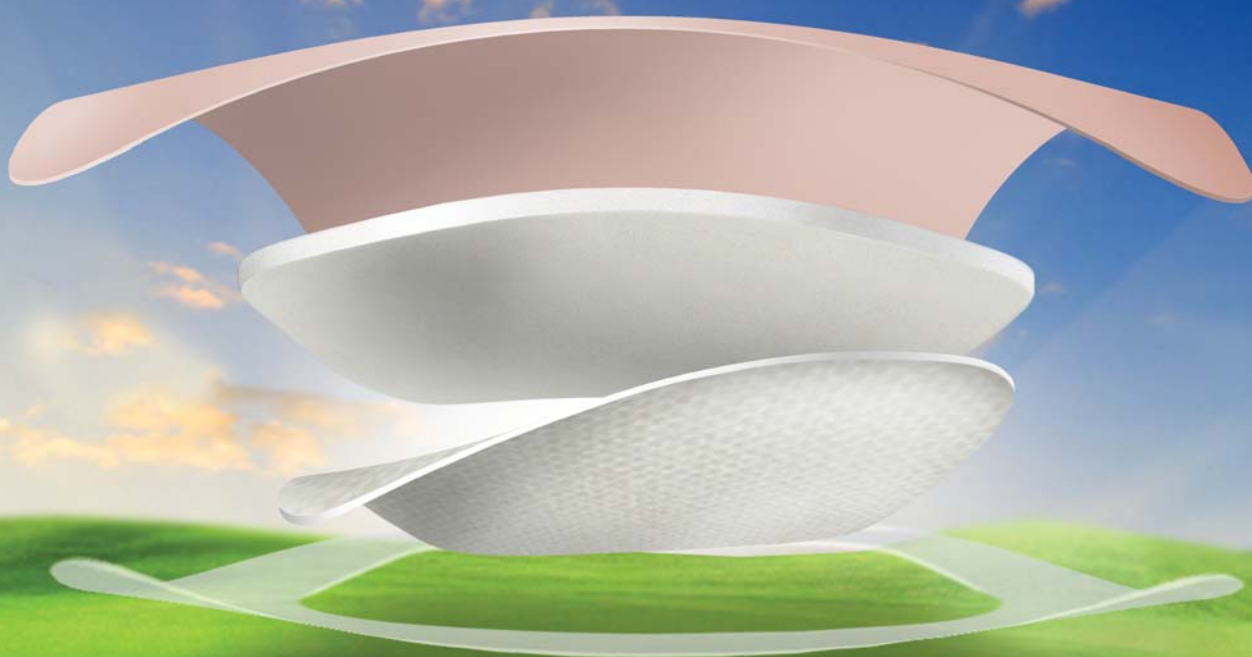


Everything you love about foam dressings *and more*



Available on Drug Tariff from 1st November 2012

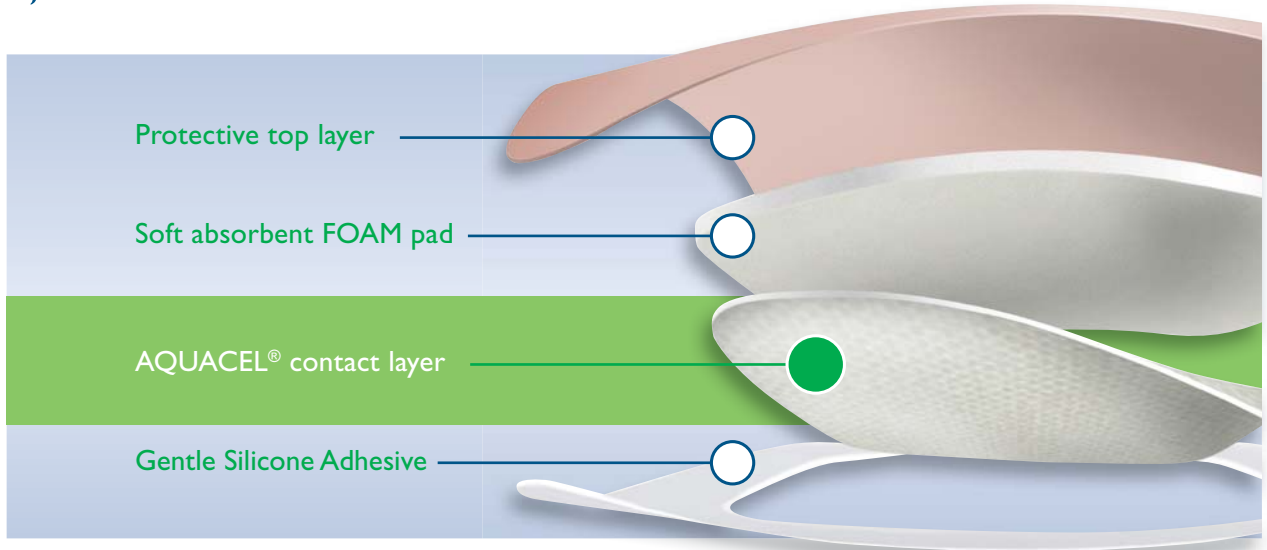
Introducing

NEW AQUACEL[®]
Foam



The **only** FOAM that has it all – comfort, simplicity
and the healing benefits of an AQUACEL[®] contact layer

Flexible, Soft and Gentle



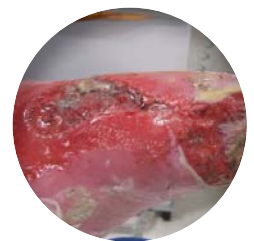
- Simple to use
- Easy to apply and remove¹
- Suitable for all exuding wounds
- Waterproof, viral & bacterial barrier^{2,a}



CUTTABLE

An ideal combination of AQUACEL[®] contact layer and a gentle silicone adhesive

- Reduces pain while in situ and upon removal¹
- Repositions without trauma¹
- Minimises patient anxiety about painful dressing changes³
- Adhesive does not stick to gloves or itself
- Healing benefits of an AQUACEL[®] contact layer



Before AQUACEL[®] Foam*

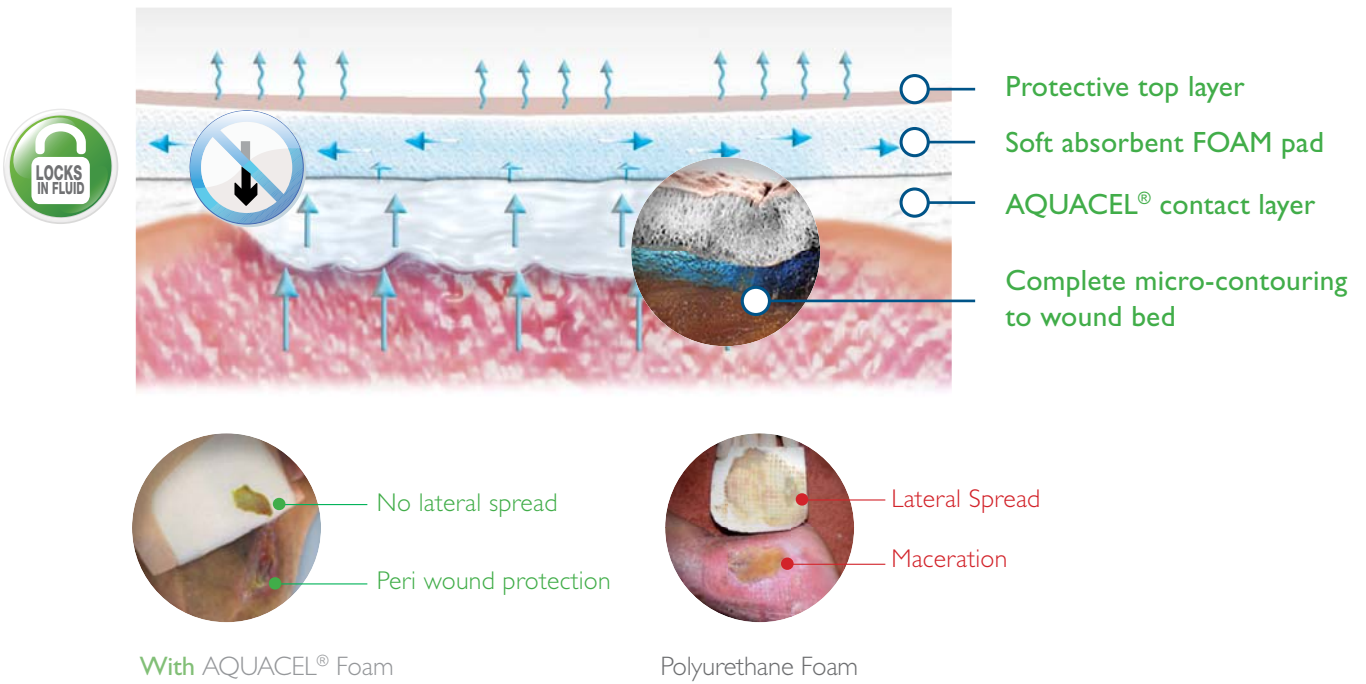


After AQUACEL[®] Foam*

* Images used with the kind permission of Rosalyn Thomas, Deputy Head of Podiatry, Diabetes Centre, Morriston Hospital Swansea. Note wound was managed post larval therapy with AQUACEL Extra and AQUACEL Foam dressing due to high exudate levels. Once exudate levels decreased and the wound became shallow AQUACEL Foam was continued as primary dressing.

Out foam dressings and more

Facilitates Healing: the **only** FOAM to vertically wick which minimises lateral spread of fluid, reducing risk of maceration^{a4-7}



The **only** FOAM that has it all – comfort, simplicity, and the healing benefits of an AQUACEL® contact layer

	AQUACEL® Foam Dressing	Mepilex™ Border Dressing	Allevyn™ Gentle Border	Biatain™ Silicone
Comparable total fluid handling ^{a8}	✓	✓	✓	✓
Gentle Adhesive for the skin ^{a9}	✓	✓	✓	✓
Adhesive not covering wound contact area	✓	-	-	✓
Observed complete micro-contouring to simulated wound bed ^{a10}	✓	-	-	-

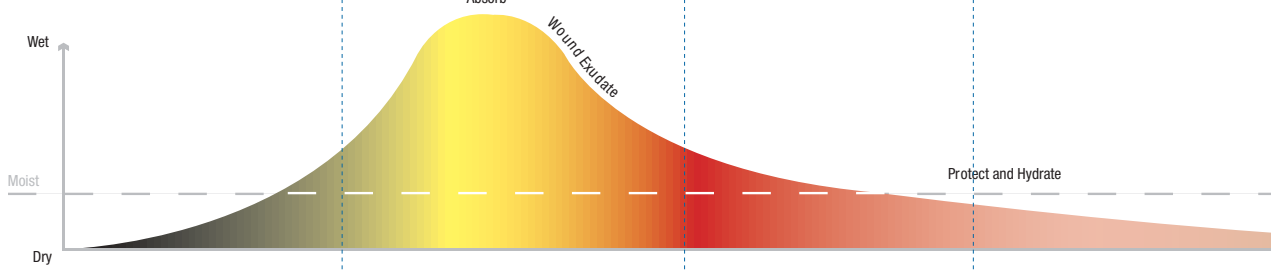
^aAs demonstrated in vitro.

new AQUACEL[®] Foam

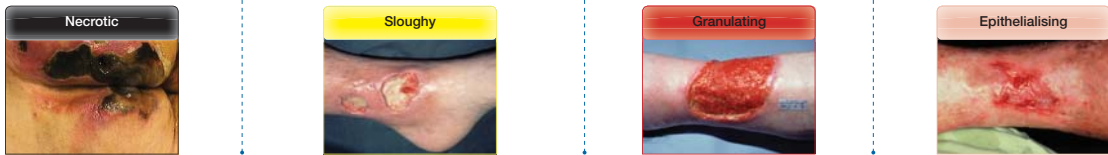
ConvaTec Solution



Exudate Level



Tissue Type



Product Code	Dressing Size	Pad Size	Pack Size	PIP Codes	NHS Codes
NON-ADHESIVE					
420631	5 cm x 5 cm	5 cm x 5 cm	10	369-9311	ELY412
420633	10 cm x 10 cm	10 cm x 10 cm	10	369-9329	ELY413
420635	15 cm x 15 cm	15 cm x 15 cm	5	370-2750	ELY414
420636	20 cm x 20 cm	20 cm x 20 cm	5	370-2776	ELY416
420637	15 cm x 20 cm	15 cm x 20 cm	5	370-2768	ELY415
ADHESIVE					
420680	10 cm x 10 cm	7 cm x 7 cm	10	370-2784	ELY417
420619	12.5 cm x 12.5 cm	8.5 cm x 8.5 cm	10	370-2792	ELY418
420621	17.5 cm x 17.5 cm	13.5 cm x 13.5 cm	10	370-2800	ELY419
420623	21 cm x 21 cm	17 cm x 17 cm	5	370-2818	ELY420
420624	25 cm x 30 cm	19 cm x 24 cm	5	370-7361	ELY421
ADHESIVE HEEL					
420625	19.8 cm x 14 cm (Heel)	14 cm x 8.7 cm	5	370-7486	ELY422
ADHESIVE SACRAL					
420626	20 cm x 16.9 cm (Sacral)	11.4 cm x 13.5 cm	5	370-6041	ELY423



To learn more about AQUACEL[®] foam dressing or to arrange a visit from your ConvaTec representative, please call 0800 289 738 (UK) or 1 800 946 938 (ROI).

www.convatec.com/aquacelfoam

References: 1. Healthy Volunteer Study Report, Protocol CW-0207-11-A736. Data on File, ConvaTec Inc. 2. AQUACEL[®] foam dressing-waterproofness, bacterial and viral barrier testing. WHRI 3538 MS069. Data on File, ConvaTec Inc. 3. Moffatt CJ. Understanding wound pain and trauma: an international perspective. In: Pain at Wound Dressing changes. European Wound Management Association Position Document. 4. Walker M, Hobot JA, Newman GR, Bowler PF. Scanning electron microscopic examination of bacterial immobilisation in a carboxymethylcellulose. 5. Robinson BJ. The use of a hydrofiber dressing in wound management. J Wound Care. 2000;9(1):32-34. 6. Vining MJ, Parsons D. Physico-chemical characterisation of carboxymethylated spun cellulose fibres. Biomaterials. 2001;22(9):903-912. 7. In vitro testing of AQUACEL[®] foam and competitive dressing. lateral spread. WHRI3525 MS065. Data on File, ConvaTec Inc. 8. In vitro testing of AQUACEL[®] foam and competitor dressings-fluid handling capacity. WHRI3533 MS067. Data on File, ConvaTec Inc. 9. CVT trials 17650 and foam competitor products: evaluation of cellular adhesion to wound dressings. CCA084. Data on File, ConvaTec Inc. 10. In-vitro testing of AQUACEL[®] foam dressings and competitor dressings-intimate contact. WHRI3524 MS064. Data on File, ConvaTec Inc.

AQUACEL[®], the AQUACEL[®] logo, ConvaTec, the ConvaTec logo, Hydrofiber and the Hydrofiber logo are trademarks of ConvaTec Inc., and are registered trademarks in the U.S. All other trademarks are the property of their respective owners. © 2012 ConvaTec Inc.

AP-013189-GB
WCON577

new AQUACEL[®] Foam

