

# neria™ soft 90 infusion sets

The neria™ soft 90 infusion set is a soft cannula infusion set inserted at a 90 degree angle (straight in). The product features a disconnect option for more flexibility and the introducer needle can be secured after use for increased needle safety.

## Product Specifications

**Cannula:** Soft

**Insertion angle:** 90 degrees (straight in)

**Disconnection:** Yes at site

**Introducer needle gauge:** G27

**Soft cannula diameter:** 0.68 mm

**Adhesive:** Built-in, skin friendly<sup>1</sup> non-woven polyester, acrylic adhesive

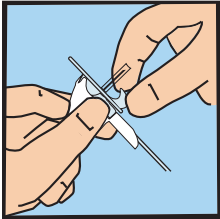
**Needle safety:** Yes, active needle safety system

Soft cannula lengths	Tubing lengths	Priming volumes
6 and 9 mm	30, 60 and 110 cm	30 cm ~ 0.05 ml 60 cm ~ 0.10 ml 110 cm ~ 0.15 ml

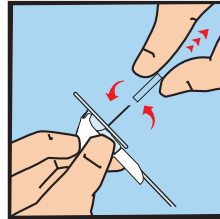
The neria™ soft 90 infusion sets are sold in boxes containing 10 sets.

Reference: <sup>1</sup> Biological Safety Testing, October 2011, Data on File, Unomedical a/s.

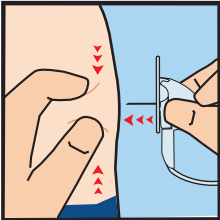
# neria™ soft 90 infusion sets user steps



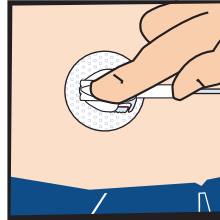
1. Prime the tubing according to the pump manufacturer's instructions. Pull gently to remove the adhesive backing paper.



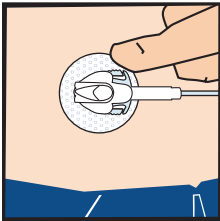
2. Gently twist and pull to remove the needle guard.\*



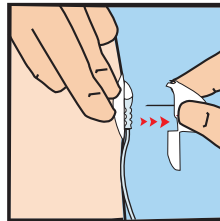
3. Pinch the skin and insert the neria™ soft 90 infusion set at a 90 degree angle (straight in). Insert as illustrated with one finger on top of the insertion handle.\*



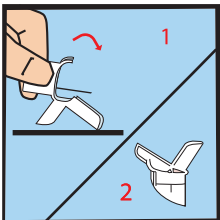
4. Push gently on top of the insertion handle to secure complete insertion of the soft cannula.



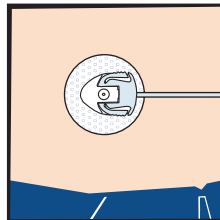
5. Press the adhesive onto the skin.



6. Place two fingers on the adhesive and remove the introducer needle by gently pulling the insertion handle straight out.



7. Secure the introducer needle by closing the insertion handle against a hard surface to cover the needle.



8. Check the infusion site frequently.

\*Caution: Be careful not to pull the cannula housing out of the insertion handle. Make sure there is no gap between the cannula housing and the insertion handle.

Please note that this guide only illustrates some of the steps to follow when inserting the neria™ soft 90 infusion sets and it is not a substitute for reading the instructions for use which comes with the product.

neria is a trademark of Unomedical a/s © ConvaTec Inc. 2017 AP-017776-MM (Vers. 1.1)