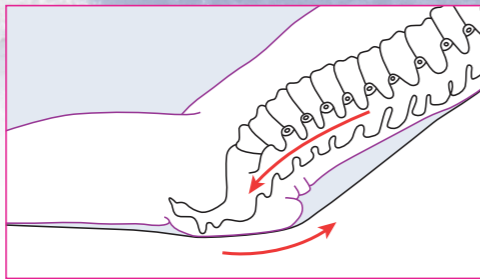


# When exposure leads to breakdown...

## Friction and shear forces cause damage to skin and tissue<sup>1</sup>

- Friction can result in redness, inflammation and sometimes blistering and can be caused by movement of a patient across surfaces such as clothes or bed linen.<sup>1</sup>
- Shear forces can result in deformation of skin and tissues, occlusion of blood vessels and ischemia induced damaged.<sup>1</sup>



Shearing force - Friction keeps the skin in place against the support surface while gravity forces the patient's body to the foot of the bed.<sup>3</sup>  
Adapted from Loeper JM et al: Therapeutic positioning and skin care, Minneapolis, 1986, Sister Kenny Institute.

## Excess moisture makes skin more susceptible to damage from shear forces<sup>2</sup>

- Perspiration, feces and urine are all common sources of excess moisture.<sup>2</sup>

protect and defend.

## Whatever you need, trust the AQUACEL® Foam family of dressings

Where you need additional support with exudate management consider AQUACEL® Foam dressing. For wounds that are infected or at risk of infection choose AQUACEL®Ag Foam dressing.



## Sensi-Care® Sting Free Skin Barrier

In areas where adherence may be challenging or perspiration an issue consider using Sensi-Care® Sting Free Skin Barrier prior to AQUACEL® Foam Pro dressing application.

## Ordering Information

AQUACEL® Foam Pro Adhesive Sacral			
Product Codes	Dressing Size (inches)	Pad Size (inches)	Dressings Per Pack
421579	8.0 x 7.0	4.5 x 5.3	5
421580	9.4 x 8.4	6.4 x 5.4	5

Sensi-Care™ Sting Free Protective Skin Barrier			
Product Codes	Product Description	Product Size	Case Quantity
413501	Sensi-Care™ Sting Free Protective Skin Barrier Wipes (16cm x 12cm, 3ml)	Box of 30 wipes	20 Boxes
420797	Sensi-Care™ Sting Free Protective Skin Barrier Spray (28ml)	28ml Spray Bottle	12 Bottles

To learn more about AQUACEL® Foam Pro dressings or to arrange a visit from your ConvaTec representative.

Please call 1-800-422-8811  
[AQUACEL.com/foam](http://AQUACEL.com/foam)

References: 1. The Etiology of Pressure Ulcers. In National Pressure Ulcer Advisory Panel, European Pressure Ulcer Advisory Panel and Pan Pacific Pressure Injury Alliance. Prevention and Treatment of Pressure Ulcers: Clinical Practice Guideline. Emily Haesler (Ed.). Cambridge Media: Osborne Park, Western Australia; 2014. 2. Delfoor T, Gryphonck MH. Sitting posture and prevention of pressure ulcers. Applied Nursing Research. 1999;12(3):136. (As cited in Skin and Tissue Assessment. National Pressure Ulcer Advisory Panel, European Pressure Ulcer Advisory Panel and Pan Pacific Pressure Injury Alliance. Prevention and Treatment of Pressure Ulcers: Clinical Practice Guideline. Emily Haesler (Ed.). Cambridge Media: Osborne Park, Western Australia; 2014.) 3. Bryant RA, Clark RAF. Skin pathology and types of damage. In Bryant RA, Nix DP (Eds.) Acute and Chronic Wounds. Current Management Concepts. 3rd ed. St. Louis, MO: Mosby, Inc. 2007:100-129. 4. Emerging therapies for prevention of pressure ulcers. In National Pressure Ulcer Advisory Panel, European Pressure Ulcer Advisory Panel and Pan Pacific Pressure Injury Alliance. Prevention and Treatment of Pressure Ulcers: Clinical Practice Guideline. Emily Haesler (Ed.). Cambridge Media: Osborne Park, Western Australia; 2014. 5. In-vitro Performance Characteristics of AQUACEL® Foam Pro WHR14536MS129. 2015. Data on File. ConvaTec. 6. Walker M, Hobot JA, Newman GR, Bowler PG. Scanning electron microscopic examination of bacterial immobilisation in a carboxymethylcellulose (AQUACEL®) and alginate dressings. Biomaterials. 2003;24(5):883-890.  
©™ AQUACEL and Hydrofiber are registered trademarks of ConvaTec Inc.  
© 2015 ConvaTec Inc. AP-016014-US.



AQUACEL® Foam Pro  
Skin's Guardian



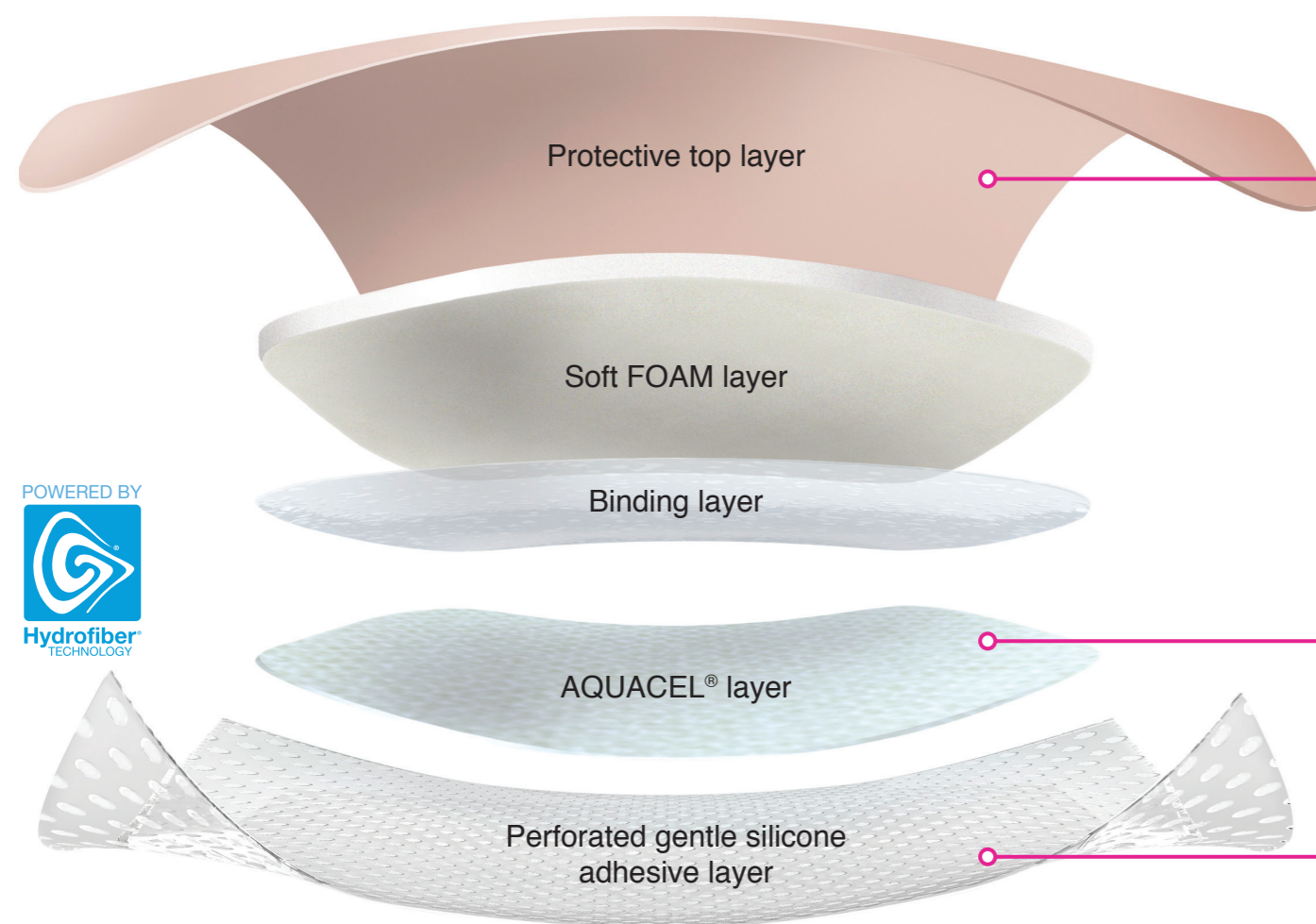
Protecting.  
Defending.  
Nurturing.



# AQUACEL<sup>®</sup> Foam Pro

Skin's Guardian

The only multilayered silicone foam dressing powered by Hydrofiber<sup>®</sup> Technology



When selecting a prophylactic dressing the NPUAP guidelines recommend the following are considered:<sup>4</sup>

- ability of the dressing to manage microclimate;
  - ease of application and removal;
  - ability to regularly assess the skin;
- anatomical location where the dressing will be applied; and
  - the correct dressing size.

## Protecting. Defending. Nurturing.

Designed to help protect the skin from breakdown

AQUACEL<sup>®</sup> Foam Pro dressing is designed to protect the skin from breakdown caused by moisture, friction and shear forces when used as part of a protocol of care.<sup>†,‡,5</sup>

**Smooth, breathable, waterproof film designed to:<sup>†,‡,5</sup>**

- help maintain a healthy skin microclimate<sup>†,‡,5</sup>
- help minimize shear and friction,<sup>†,‡,5</sup> e.g. between bed linens and dressing
- enable easy cleaning of the dressing

**AQUACEL<sup>®</sup> layer** helps provide a healthy skin microclimate by absorbing and locking away excess moisture from the skin.<sup>†,‡,5,6</sup>

**Perforated gentle silicone adhesive layer:<sup>‡,5</sup>**

- provides secure, skin-friendly adhesion<sup>‡,5</sup>
- allows the dressing to be repositioned following skin assessment<sup>‡,5</sup>
- allows easy application and removal<sup>‡,5</sup>

<sup>†</sup>When used as part of a protocol of care.  
<sup>‡</sup>As demonstrated *in-vitro*.

Designed to help create a moist wound healing environment

AQUACEL<sup>®</sup> Foam Pro is powered by Hydrofiber<sup>®</sup> Technology which:



- absorbs wound fluid and creates a soft gel, maintaining a moist wound healing environment that supports the body's healing process.
- locks in exudate through vertical wicking which may reduce the risk of maceration of the peri-wound skin.<sup>‡,5,6</sup>

Designed to adapt



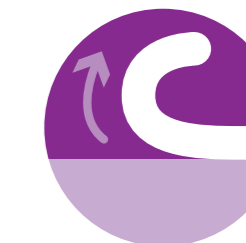
Easy to apply and remove<sup>‡,5</sup>



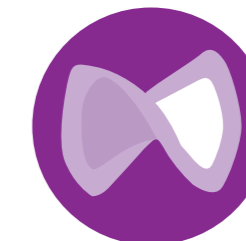
Water/shower proof<sup>‡,5</sup>



Viral and bacterial barrier<sup>‡,5</sup>



Adhesive does not stick to itself<sup>‡,5</sup>



Soft, gentle, flexible and conformable



Maximum recommended wear time 7 Days

<sup>4</sup>As demonstrated *in-vitro*.