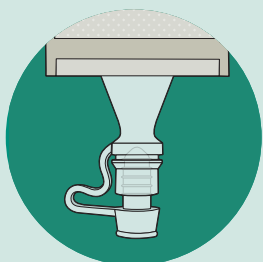


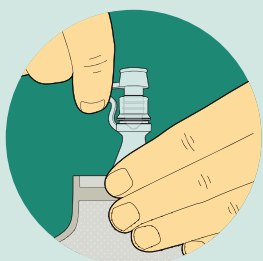


## 1 Closing the pouch

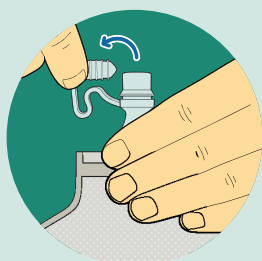


Make sure soft, ribbed cork is securely pushed into the bottom of the drainage tap.

## 2 Draining the pouch



Tilt tap up and towards you.



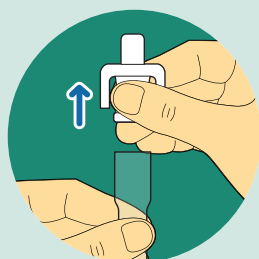
Hold base of tap and open by pulling cork out with the other hand.



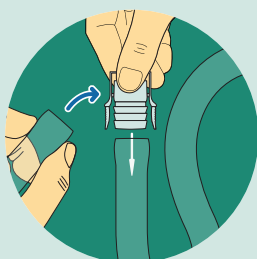
Direct tap into toilet to drain the urine.

## 3 Using with the ConvaTec Night Drainage Container Set

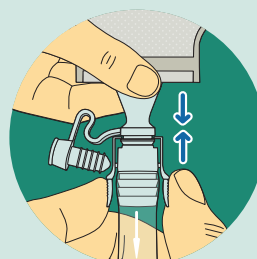
\*Adapters Included in Product Box are for Hospital Drainage Bags



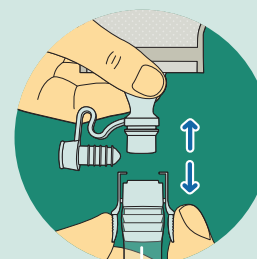
Remove the white adapter from night drainage tubing, it will release with a slight tug (this white adapter will be replaced in the next step). If existing white adapter has already been removed, move on to next step.



Open the product box and take out the short tube with the white adapter. Separate the white adapter from the tube, it will release with a slight tug. Insert the ringed section of this white adapter into the open end of the night drainage tubing.



Connect the pouch to drainage by gently inserting the open base of drainage tap into the wider opening of the white adapter on the night drainage tubing. Use your other hand to hold the white adapter until it clips securely onto the tap.



To remove, hold the end of your pouch tap with one hand and gently pull on the white adapter connected to the night drainage tubing with your other hand until released.

### Support and advice every step of the way

For Customer Care and to order your FREE samples, call:

Freecall **1800 335 276** (Australia)

**0800 441 763** (New Zealand)

or email **connection.au@convatec.com**

**connection.nz@convatec.com**

Please refer to the package insert for complete instructions for use.

Australia [www.convatec.com.au](http://www.convatec.com.au) New Zealand [www.convatec.co.nz](http://www.convatec.co.nz)

®/™ indicates trademarks of ConvaTec Inc.  
©2020 ConvaTec Inc. AP-021236-AU May 0589