



ESTEEM™

WITH MOULDABLE BASEPLATE

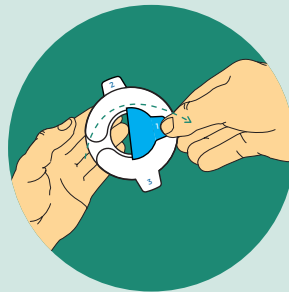


1

Mouldable disc application



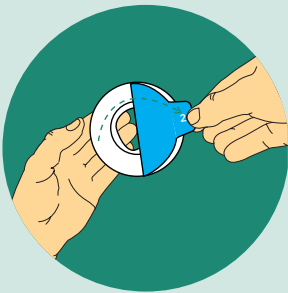
Remove mouldable disc from the pouch and warm it in your hand.



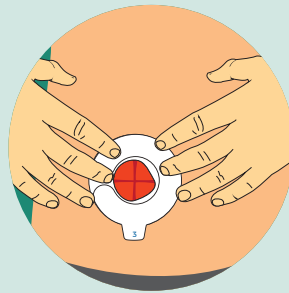
After warming, remove plastic liner marked #1. This is the moulding side.



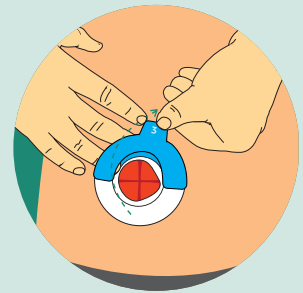
Roll and mould the disc to the size of the stoma. **Do not stretch, pull or cut.** Pinch into place once desired size is reached.



Remove plastic liner marked #2. This side will go on the skin.



Place the disc on the body. Push the rolled Mouldable Technology™ toward the stoma to ensure a close, snug fit around the stoma

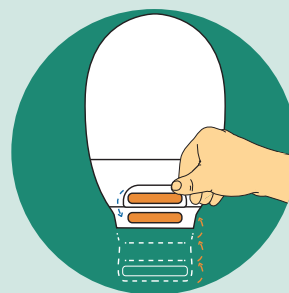


Remove plastic liner marked #3.

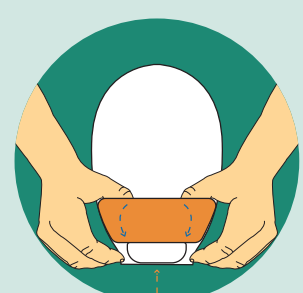
2

Closing a drainable pouch with InvisiClose™ Tail Closure

TIP
If using a drainable pouch over a closed pouch, we recommend you close the tail closure before applying your pouch to the baseplate.



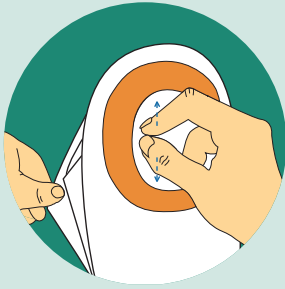
Fold the end up towards you until the interlocking closures line up. Press and pinch around the closure to secure.



Turn the Lock-it-Pocket™ inside-out to tuck tail inside.

2

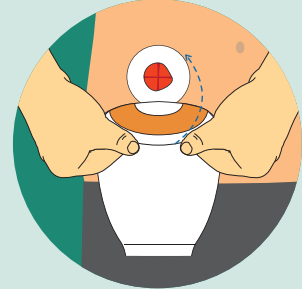
Applying pouch to the mouldable disc



Separate the sides of the pouch to allow some air to enter.



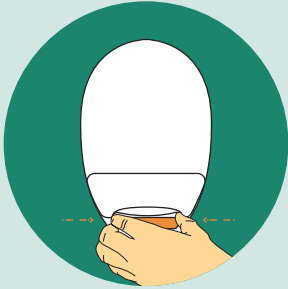
Remove pouch plastic release liner.



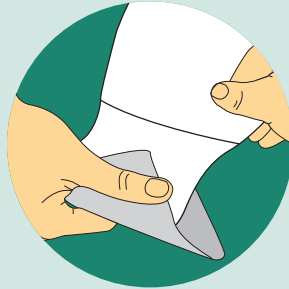
Place pouch on the mouldable disc. Smooth and hold the pouch against the mouldable disk for 30 seconds.

4

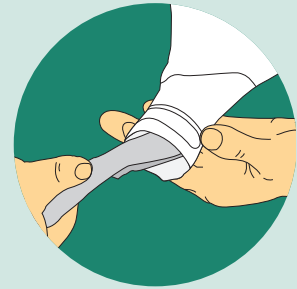
Emptying and cleaning a drainable pouch



To empty pouch, tilt the tail up towards your body. Peel open the closure and unravel tail. Unlock pouch closure and open the tail by pushing in both ends of the outlet end-strips with fingers; drain pouch.



Tips for cleaning the pouch: Support the pouch with one hand and wipe tail of pouch in firm downward motion with toilet tissue in other hand.



Clean the inside surface of tail with toilet tissue or baby wipe.

5

Removing the pouch



When it's time to change the pouch, the disc and pouch can be removed as one. Gently pull the baseplate down, away from the skin while supporting the adjacent skin with your other hand.



TIP

To ensure easy removal of the baseplate use ConvaTec Niltac™ Adhesive Removal where appropriate.

For more information, call us on - 0800 282 254