

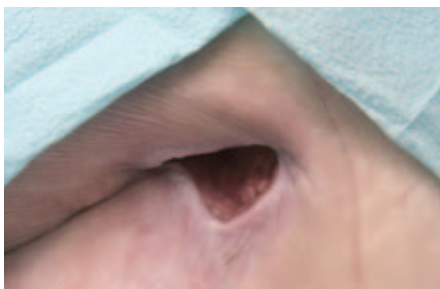
Application guide*

Using Versiva[®] XC[™] Dressing plus AQUACEL[®] Ag Dressing on deep wounds

This guide is provided to assist health care professionals who are managing patients with deep wounds with **Versiva[®] XC[™]** dressing, in combination with **AQUACEL[®] Ag** dressing.

- Use Versiva[®] XC[™] dressing in combination with AQUACEL[®] Ag dressing for wounds that are infected or at risk of infection.
- Select a Versiva[®] XC[™] dressing size and shape that is suitable for the anatomical location of the wound, ensuring that it is large enough for the absorbent pad to cover the entire wound bed.
- When removing the dressings from their sterile packaging, minimise finger contact with the wound contact surface.

How to use Versiva[®] XC[™] Dressing in combination with AQUACEL[®] Ag Dressing*



Ensure the wound and surrounding skin is clean. Cleanse with an appropriate wound care product and dry the area around the wound thoroughly.



Pack the AQUACEL[®] Ag ribbon dressing into the deep wound, up to 80% capacity. The dressing will expand to fill the wound on contact with exudate. Leave at least 2.5cm of dressing outside the wound for easy retrieval.



Select the appropriate size and shape of Versiva[®] XC[™] dressing, ensuring that the absorbent pad area comfortably covers the entire wound bed.



As you begin to apply the Versiva[®] XC[™] dressing, line up the centre of the absorbent pad with the centre of the wound. Adhesive dressings will affix to the surrounding skin. Secure Non-Adhesive dressings with an appropriate bandage or tape.



Versiva[®] XC[™] dressing and AQUACEL[®] Ag dressing are designed to remain in place for up to 7 days. Monitor the wound and dressings closely in the first 7-10 days for increased exudate flow and change dressings as and when necessary.

*Please see individual package inserts for full instructions for use.

Hints & tips for Versiva[®] XC[™] Dressing*

- **Choosing a dressing**
Ensure you select the dressing shape that is suitable for the anatomical location of the wound. For example square, sacral or heel.
- **Dressing pad size**
Select a dressing size and shape that is large enough for the absorbent pad to cover the entire wound bed.
- **Monitoring exudate flow**
Greater exudate flow may be experienced during the first 7-10 days after initial management of a wound with Versiva[®] XC[™] dressing. Dressings should be monitored closely and changed as often as necessary during this period. Dressings can be left on the wound for up to 7 days when the wound is closer to being healed.
- **Heavily exuding wounds**
If Versiva[®] XC[™] dressing is being used as a primary dressing, and large volumes of wound exudate are produced or there is an increase in exudate levels, it may be beneficial to use it in conjunction with AQUACEL[®] or AQUACEL[®] Ag dressing to manage the exudate.
- **Healing or maceration?**
It is important not to confuse new epithelial tissue growth with maceration when using Versiva[®] XC[™] dressing. A uniform white border at the inner wound margin is likely to be new tissue, rather than maceration, which usually presents as soggy tissue at the low point of the wound.

Versatile, effective wound care from ConvaTec

Versiva[®] XC[™] dressing is available in a range of formats, including Adhesive, Non-Adhesive, Adhesive Sacral and Adhesive Heel (shown right).

Versiva[®] XC[™] dressing can be cut to any shape or size without losing Hydrofiber[®] Technology performance.

For more information and support please contact us.

0800 000 000

www.convatec.com

®/TM indicates trademarks of ConvaTec Inc.
©2009 ConvaTec Inc. AP-007182-MM



Heel application (Adhesive)



Leg application (Non-Adhesive)



Sacral application (Adhesive)



Cut to shape for toe application (Non-Adhesive)

*Please see individual package inserts for full instructions for use.