



**WE CAN**  
Help Improve Lives

**ESTEEM™  portfolio**



*One-Piece Convexity*

### The Purpose of Convexity

All bodies are different. Convex wafers are designed to help manage irregular stomas and abdomens to help reduce leakage and simplify stoma management.

- Convexity is the outward curving of the baseplate or skin barrier.<sup>1,2</sup>
- Convexity applies a uniform pressure to the immediate peristomal skin, improving the projection of the stoma for drainage.<sup>3</sup>
- Convexity helps maintain a secure seal between the pouch and the skin.<sup>4</sup>

The Esteem™+ one-piece convex portfolio offers a range of products designed to address different stoma shapes and sizes. Offerings includes soft and firm convexity, various depths, and help provide comfort, freedom, security and reassurance.

#### SKIN BARRIER TYPES



**Flat** - skin barrier is flat against the skin.



**Convex** - outward curving of the skin barrier towards the skin.<sup>1, 2</sup>

### When to Use Convexity



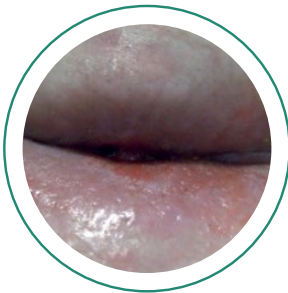
#### Flush Stomas

Located at the same level as the abdomen skin surface, and does not protrude<sup>5</sup>



#### Retracted Stomas

Stoma pulled into the abdomen below skin level or having little or no spout<sup>6</sup>



#### Skin Folds

A stoma which is deep in a skin fold/crease<sup>7</sup>

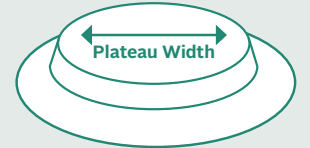


#### Soft or Flaccid Abdomens

An abdomen requiring firm level of support to stabilize the pouching system<sup>5</sup>

### Why Plateau Width Matters

Successful convexity must press down on the peristomal skin enough to make a good seal around the base of the stoma and help with protrusion.<sup>7</sup>



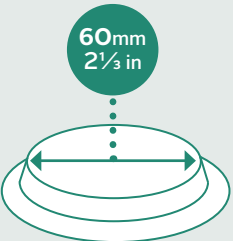
Convexity Depth Measurement

#### Convexity Pressure

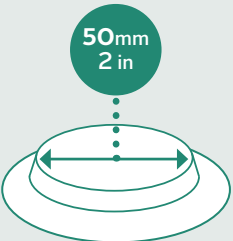
A narrow plateau width may be used to create pressure directly around the stoma with lesser pressure as the plateau width gets wider.

#### Plateau Width

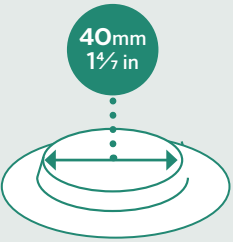
A wider plateau width may be used to flatten out skin creases away from the stoma.



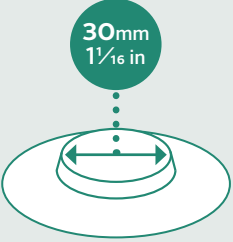
V0 Plateau Width



V1 Plateau Width



V2 Plateau Width



V3 Plateau Width

### Esteem™+ Soft Convex

Available in Cut-to-Fit and Pre-Cut

Drainable & Urostomy Options

Convexity Depth = 4mm (1⁄8 in)

#### Key Benefits

- Shallow profile minimizes pressure and helps conform to the body
- Suitable for immediate post-operative use



### Esteem™+ Flex Convex

Available in Cut-to-Fit and Pre-Cut

Drainable and Ursotomy Options

Convexity Depth = 7mm (2⁄8 in)

#### Key Benefits

- Combines the comfort and freedom of flexibility with the firmness of convexity



### Esteem™+ (Firm) Convex

Available in Pre-Cut

Drainable Options

Convexity Depth = 5mm (3⁄16 in)

#### Key Benefits

- May be suitable for patients with soft, flaccid abdomens
- Encourages protrusion of flush or retracted stomas



REFERENCES: 1. Rolstad BS. Principles and techniques in the use of convexity. Ostomy Wound Manage. 1996; 42(1):24-32. 2. Pontieri, Lewis V. Basics of ostomy care. Medsurg Nurs. 2006; 15(4):199-202. 3. Hanley J. Convex stoma appliances: are we getting it right? British Journal of Nursing (Stoma Supplement). 2013; 22 (16). 4. Cronin E. A guide to the appropriate use of convex stoma care products. Gastrointestinal nursing. 2008; 6 (2); 12-16. 5. Boyd, K. Clinical Protocols for Stoma Care - Use of convex appliances. Nursing Standard. 2004; 18(20): 37-38. 6. Burch, 2011; Management of Stoma Complications, Nursing Times.net, 10 Nov 2011. 7. Turnbull GB. The convexity controversy. Ostomy Wound Manage. 2003; 49(1):16-17. www.o-wm.com/article/1203 Accessed 29 February, 2016.



## Esteem™ + Soft Convex



### Drainable | Cut-to-Fit

Product Code	Plateau Size	Cutting Range	Quantity
422363	V1	20-47mm (¾ - 1⅞ in)	10
422364	V2	15-40mm (⅝ - 1⅝ in)	10
422365	V3	10-28mm (⅜ - 1⅞ in)	10



### Drainable | Pre-Cut

Product Code	Plateau Size	Hole Diameter	Quantity
422539	V1	25mm (1 in)	10
422540	V1	30mm (1 ⅙ in)	10
422541	V1	35mm (1 ⅜ in)	10
422545	V2	25mm (1 in)	10
422546	V2	30mm (1 ⅙ in)	10



### Urostomy | Cut-to-Fit

Product Code	Plateau Size	Cutting Range	Quantity
422551	V1	20-47mm (¾ - 1⅞ in)	10
422557	V2	15-40mm (⅝ - 1⅝ in)	10
422562	V3	10-28mm (⅜ - 1⅞ in)	10



### Urostomy | Pre-Cut

Product Code	Plateau Size	Hole Diameter	Quantity
422552	V1	25mm (1 in)	10
422553	V1	30mm (1 ⅙ in)	10
422558	V2	20mm (⅝ in)	10
422559	V2	25mm (1 in)	10
422560	V2	30mm (1 ⅙ in)	10
422564	V3	20mm (⅝ in)	10
422565	V3	25mm (1 in)	10

## Esteem™ + Flex Convex



### Drainable | Cut-to-Fit

Product Code	Plateau Size	Cutting Range	Quantity
422159	VO	20-57mm (¾ - 2⅝ in)	10
421615	V1	20-43mm (¾ - 1⅝ in)	10
421619	V2	20-35mm (¾ - 1⅝ in)	10
421622	V3	20-25mm (¾ - 1 in)	10



### Drainable | Pre-Cut

Product Code	Plateau Size	Hole Diameter	Quantity
421616	V1	25mm (1 in)	10
421617	V1	30mm (1⅙ in)	10
421618	V1	35mm (1⅜ in)	10
421620	V2	25mm (1 in)	10
421621	V2	30mm (1⅙ in)	10



### Urostomy | Cut-to-Fit

Product Code	Plateau Size	Cutting Range	Quantity
421623	V1	10-43mm (⅜ - 1⅝ in)	10
421626	V2	10-35mm (⅜ - 1⅝ in)	10
421628	V3	10-25mm (⅜ - 1 in)	10



### Urostomy | Pre-Cut

Product Code	Plateau Size	Hole Diameter	Quantity
421624	V1	15mm (⅝ in)	10
421625	V1	20mm (⅝ in)	10
421627	V2	15mm (⅝ in)	10
421629	V3	15mm (⅝ in)	10

## Esteem™ + (Firm) Convex



### Drainable | Pre-Cut (Transparent)

Product Code	Hole Diameter	Quantity
416738	19mm (¾ in)	10
416740	22mm (⅞ in)	10
416742	25mm (1 in)	10
416744	28mm (1⅙ in)	10
416746	32mm (1¼ in)	10
416748	35mm (1⅝ in)	10
416750	38mm (1⅞ in)	10



### Drainable | Pre-Cut (Opaque)

Product Code	Hole Diameter	Quantity
416739	19mm (¾ in)	10
416741	22mm (⅞ in)	10
416743	25mm (1 in)	10
416745	28mm (1⅙ in)	10
416747	32mm (1¼ in)	10
416749	35mm (1⅝ in)	10
416751	38mm (1⅞ in)	10



Enrolling your patients is simple. Contact your me+™ concierge at 1-877-585-0470 or visit [mepluscare.com](https://mepluscare.com)



ConvaTec

Ostomy Care