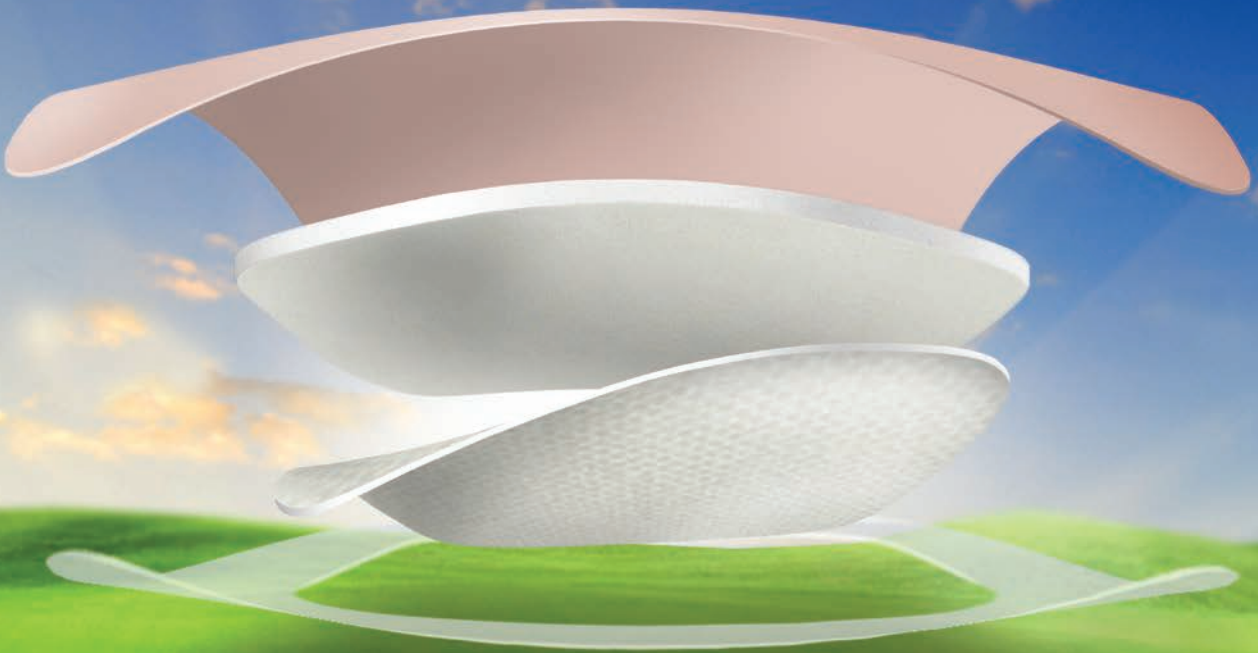


Everything you love about foam dressings *and more*



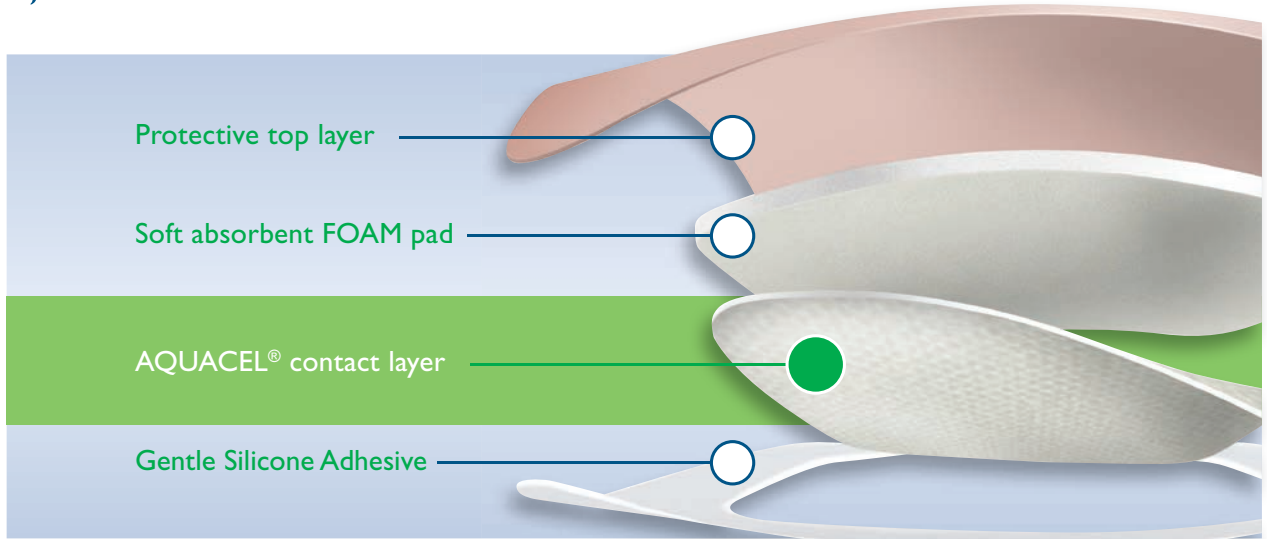
Introducing

NEW AQUACEL[®]
Foam



The **only** FOAM that has it all – comfort, simplicity
and the healing benefits of an AQUACEL[®] contact layer

Flexible, Soft and Gentle



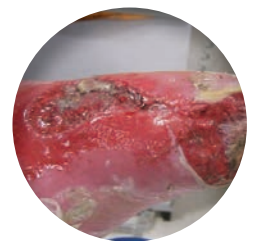
- Simple to use
- Easy to apply and remove¹
- Suitable for all exuding wounds
- Waterproof, viral & bacterial barrier^{2,a}



CUTTABLE

An ideal combination of AQUACEL[®] contact layer and a gentle silicone adhesive

- Reduces pain while in situ and upon removal¹
- Repositions without trauma¹
- Minimises patient anxiety about painful dressing changes³
- Adhesive does not stick to gloves or itself
- Healing benefits of an AQUACEL[®] contact layer



Before AQUACEL[®] Foam*

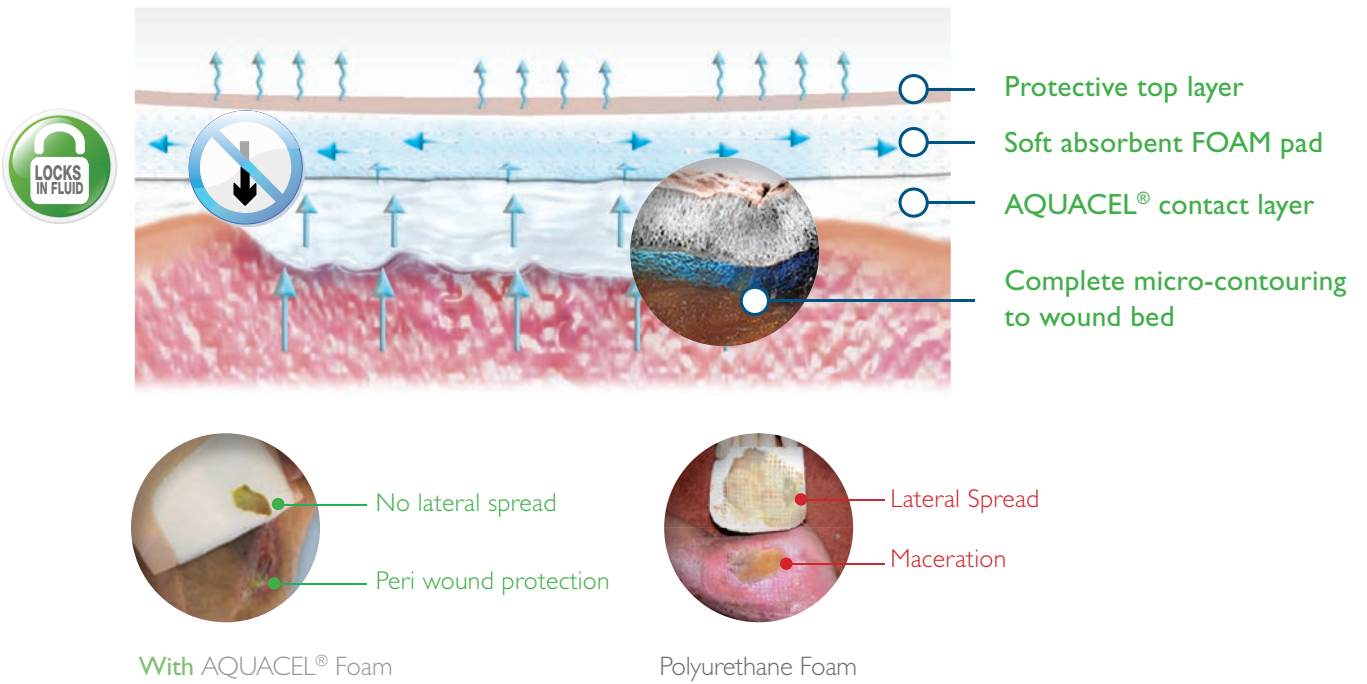


After AQUACEL[®] Foam*

* Images used with the kind permission of Rosalyn Thomas, Deputy Head of Podiatry, Diabetes Centre, Morriston Hospital Swansea. Note wound was managed post larval therapy with AQUACEL Extra and AQUACEL Foam dressing due to high exudate levels. Once exudate levels decreased and the wound became shallow AQUACEL Foam was continued as primary dressing.

Out foam dressings and more

Facilitates Healing: the **only** FOAM to vertically wick which minimises lateral spread of fluid, reducing risk of maceration^{a4-7}



The **only** FOAM that has it all – comfort, simplicity, and the healing benefits of an AQUACEL® contact layer

	AQUACEL® Foam Dressing	Mepilex™ Border Dressing	Allevyn™ Gentle Border	Biatain™ Silicone
Comparable total fluid handling ^{a8}	✓	✓	✓	✓
Gentle Adhesive for the skin ^{a9}	✓	✓	✓	✓
Adhesive not covering wound contact area	✓	-	-	✓
Observed complete micro-contouring to simulated wound bed ^{a10}	✓	-	-	-

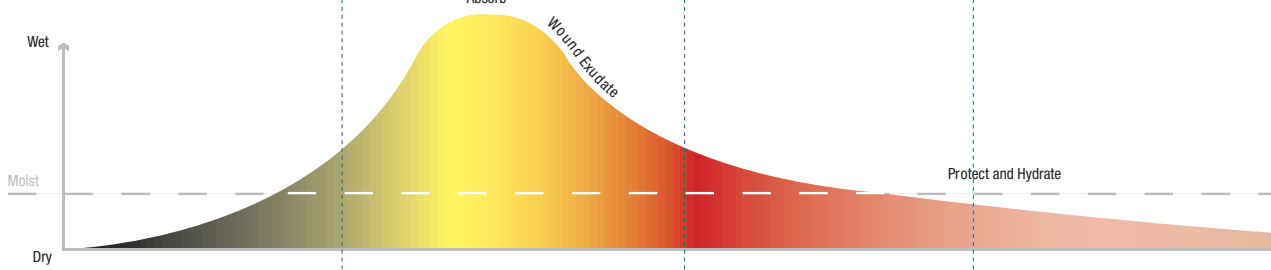
^aAs demonstrated in vitro.

NEW AQUACEL[®] Foam

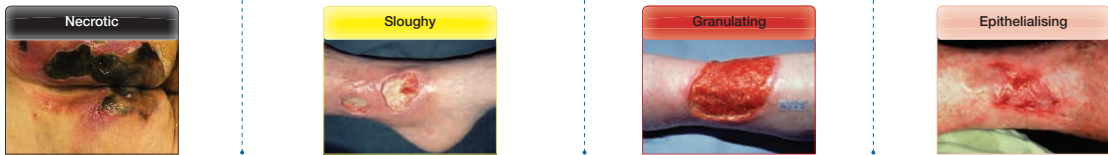
ConvaTec Solution



Exudate Level



Tissue Type



Product Code	Dressing Size	Pad Size	Pack Size
NON-ADHESIVE			
420631	5 cm x 5 cm	5 cm x 5 cm	10
420633	10 cm x 10 cm	10 cm x 10 cm	10
420635	15 cm x 15 cm	15 cm x 15 cm	5
420636	20 cm x 20 cm	20 cm x 20 cm	5
420637	15 cm x 20 cm	15 cm x 20 cm	5
ADHESIVE			
420804	8 cm x 8 cm	5.5 cm x 5.5 cm	10
420680	10 cm x 10 cm	7 cm x 7 cm	10
420619	12.5 cm x 12.5 cm	8.5 cm x 8.5 cm	10
420621	17.5 cm x 17.5 cm	13.5 cm x 13.5 cm	10
420623	21 cm x 21 cm	17 cm x 17 cm	5
ADHESIVE HEEL			
420625	19.8 cm x 14 cm (Heel)	14 cm x 8.7 cm	5
ADHESIVE SACRAL			
420626	20 cm x 16.9 cm (Sacral)	11.4 cm x 13.5 cm	5



To learn more about AQUACEL[®] Foam dressing or to arrange a visit from your ConvaTec representative, please call Australia **1800 339 412** New Zealand **0800 441 763**
www.convatec.com/aquacelfoam

References: 1. Healthy/Volunteer Study Report, Protocol CW-0207-11-A736. Data on File, ConvaTec Inc. 2. AQUACEL[®] foam dressing-waterproofness, bacterial and viral barrier testing. WHRI 3538 MS069. Data on File, ConvaTec Inc. 3. Moffatt CJ. Understanding wound pain and trauma: an international perspective. In: Pain at Wound Dressing changes. European Wound Management Association Position Document. 4. Walker M, Hobot JA, Newman GR, Bowler PF. Scanning electron microscopic examination of bacterial immobilisation in a carboxymethylcellulose. 5. Robinson BJ. The use of a hydrofiber dressing in wound management. J Wound Care. 2000;9(1):32-34. 6. Waring MJ, Parsons D. Physico-chemical characterisation of carboxymethylated spun cellulose fibres. Biomaterials. 2001;22(9):903-912. 7. In vitro testing of AQUACEL[®] foam and competitive dressing, lateral spread. WHRI3525 MS065. Data on File, ConvaTec Inc. 8. In vitro testing of AQUACEL[®] foam and competitor dressings-fluid handling capacity. WHRI3533 MS067. Data on File, ConvaTec Inc. 9. CVT trials 17650 and foam competitor products: evaluation of cellular adhesion to wound dressings. CCA084. Data on File, ConvaTec Inc. 10. In-vitro testing of AQUACEL[®] foam dressings and competitor dressings-intimate contact. WHRI3524 MS064. Data on File, ConvaTec Inc.

AQUACEL[®], the AQUACEL[®] logo, ConvaTec, the ConvaTec logo, Hydrofiber and the Hydrofiber logo are trademarks of ConvaTec Inc., and are registered trademarks in the U.S. All other trademarks are the property of their respective owners. © 2012 ConvaTec Inc.

AP-013189-GB
W388

NEW AQUACEL[®] Foam

