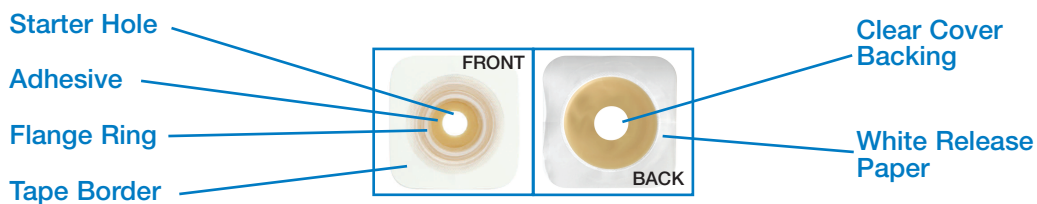


# How to use the **SUR-FIT Natura® Moldable Technology Skin Barrier**

(including convex skin barriers)



Composition of  
SUR-FIT Natura®  
Moldable Technology  
Skin Barrier



## Applying **Skin Barrier**

### BEFORE APPLICATION

Hands and peristomal skin should be clean, dry and free of any solvent or greasy substances before you begin applying the skin barrier.

### STEP 1 | **SIZING**

**A** Hold the skin barrier in front of your stoma with the **flange ring** side up.



**B** Use the **clear cover backing** on the **adhesive** as a window to view the size and shape of the stoma.

NOTE: THIS IS A MOLDABLE PRODUCT.  
**DO NOT CUT!**



### STEP 2 | **MOLDING**

**A** To personalize the stoma opening, place your fingers at the edge of the **starter hole** and begin to roll back the **adhesive** to the size and shape of your stoma.

As you roll the **adhesive** back on itself, look through the **clear cover backing** window to ensure the hole you are creating fits the size and shape of your stoma.



**B** Once you have rolled the **adhesive** back to the size and shape of your stoma, remove the **clear cover backing** from the skin barrier.



**C** Center the opening over your stoma and press the skin barrier onto your skin.



## STEP 3 | SECURING WORRY-FREE FIT

**A** If necessary, readjust the rolled **adhesive** towards the stoma to ensure a snug fit.

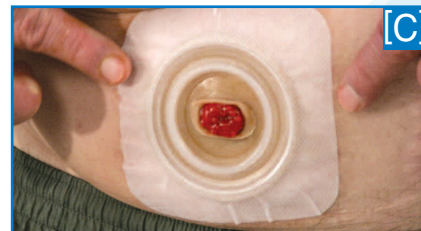


**B** Press the rolled **adhesive** down on itself around of the stoma while keeping the snug fit at the base of the stoma.

Hold the **adhesive** in place for 30 seconds to secure the skin barrier to the skin.



**C** Remove the **white release paper** and press the **tape border** against the skin, smoothing out any wrinkles.



## Applying Pouch to Skin Barrier

**A** Before attaching the pouch, allow a small amount of air to enter the pouch by gently separating the two sides.



**B** Align the **flange ring** on the pouch with the **flange ring** on the skin barrier.



**C** Press the two **flange rings** together beginning at the bottom. Circle your fingers around to snap the two **flange rings** together. Several clicks may be heard.

## Removing Skin Barrier

Support the skin with one hand and gently peel the skin barrier away from your skin. AllKare® Adhesive Remover Wipes may be used to help remove the skin barrier and any remaining residue.

## Managing Tape Border

The edges of the **tape border** may roll up when exposed to water. Simply pat the **tape border** dry, smooth out any wrinkles and press it back into place. Keep the **tape border** free of any solvents, oils or creams.



For more information on this product and others, call our Customer Relations Center (Registered Nurses on staff) at **1 800 465-6302**, Monday through Friday, 8:00 AM to 6:00 PM (EST), or visit our Web Site at [www.convatec.ca](http://www.convatec.ca)

See the package insert for complete instructions for use.  
SUR-FIT Natura and AllKare are registered trademarks of ConvaTec Inc.  
The ConvaTec Moldable Technology logo is a trademark of ConvaTec Inc.

Manufactured by:  
ConvaTec Inc.  
Princeton, NJ 08543

