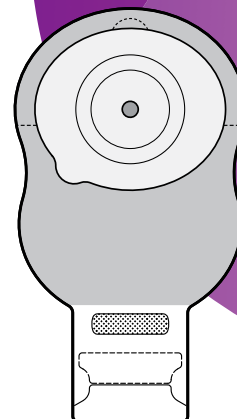


Application card

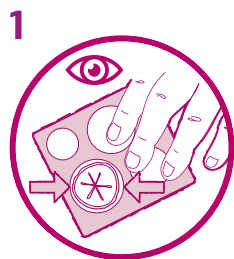
EsteemBody[®]

One-piece soft convex drainable pouch

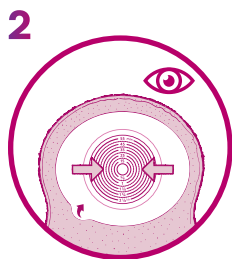
Before application, ensure your hands and the skin surrounding the stoma are clean, dry and free from oily substances.



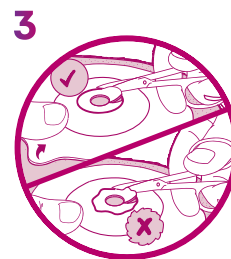
Preparation and application



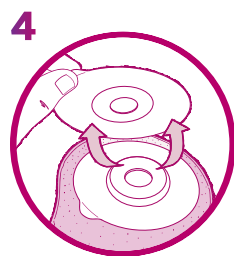
Place the stoma measuring guide over your stoma to confirm the correct size.



If using a pre-cut skin barrier, select a skin barrier with a pre-cut stoma opening slightly larger than your stoma.



If using a cut-to-fit skin barrier, transfer the size to your skin barrier and cut accordingly.



Remove skin barrier release liner.

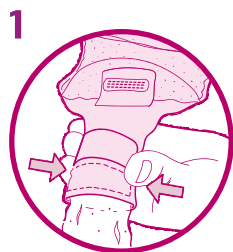


Hold the skin barrier below your stoma and apply upwards against the skin around your stoma. Press the skin barrier against the skin.



Smooth onto your skin. Maintain slight pressure on the skin barrier for 60 seconds to ensure a good seal.

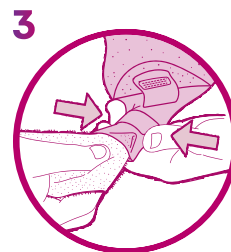
Emptying



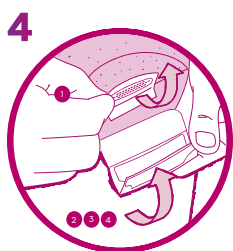
Open the tail by pushing in both ends of the outlet. Empty the contents into the toilet.



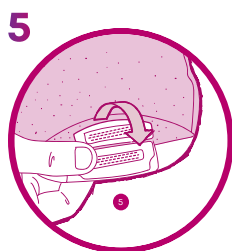
Support the pouch with one hand and wipe the tail in a firm downward motion with clean tissue.



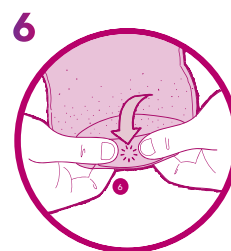
Clean the inside surface of the tail with clean tissue or wipes.



1. Fold securing strip to the up position.
2. Make fold 1 in the tail closure using plastic strips as a guide.
3. Repeat for fold 2.
4. Repeat for fold 3.

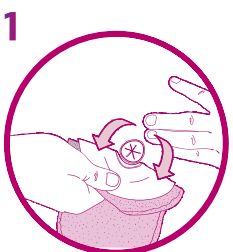


Hold tail closure while folding down securing strip.



Squeeze with thumb and fingers. You will feel it lock into place.

Removal and disposal



Start by gently lifting the top edge of the barrier, then slowly and gently peel downward.



Dispose of the pouch according to local disposal regulations.

For more information, please call our Customer Relations Center (Registered Nurses on staff) at **1-800-465-6302**, Monday through Friday, 8:00 AM to 6:00 PM (EST), or visit our Web Site at **convatec.ca**

See package insert for complete instructions for use.

©2025 Convatec Inc. ®/™ all the trademarks are the property of Convatec group companies. AP-64817-CAN-ENG V1861EN