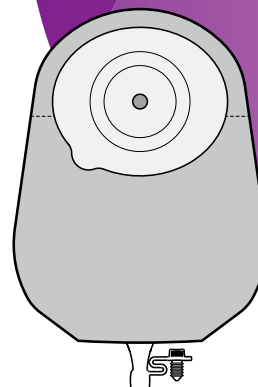


## Application card

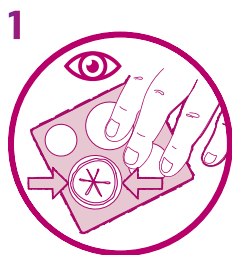
# EsteemBody<sup>®</sup>

## One-piece soft convex urostomy pouch

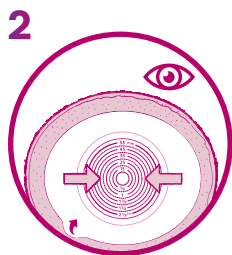
Before application, ensure your hands and the skin surrounding the stoma are clean, dry and free from oily substances.



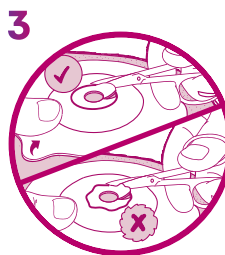
### Preparation and application



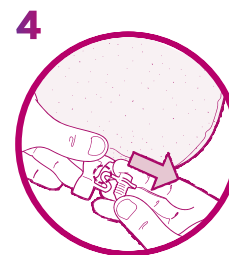
Place the stoma measuring guide over your stoma to confirm the correct size.



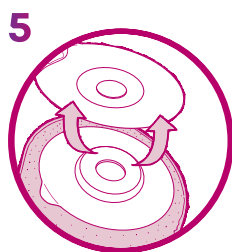
If using a pre-cut skin barrier, select a skin barrier with a pre-cut stoma opening slightly larger than your stoma.



If using a cut-to-fit skin barrier, transfer the size to your skin barrier and cut accordingly.



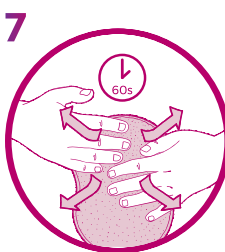
Partially inflate the pouch by blowing and separate the pouch films to allow air to enter.



Remove skin barrier release liner.

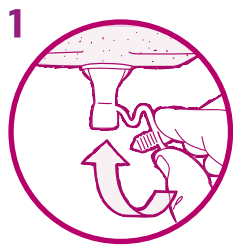


Hold the skin barrier below your stoma and apply upwards against the skin around your stoma. Press the skin barrier against the skin.

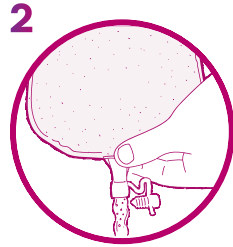


Smooth onto your skin. Maintain slight pressure on the skin barrier for 60 seconds to ensure a good seal. Gently insert the plug.

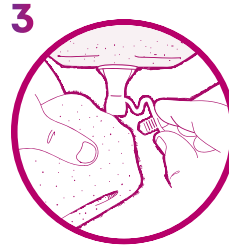
## Emptying



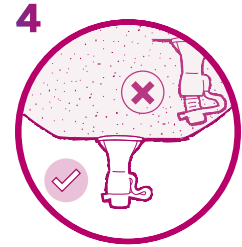
Start by tilting the tap up and towards you. Squeeze the base of the tap and open the tap with the other hand.



Direct the tap into the toilet to drain the urine.



Support the pouch with one hand, and wipe the outside of the valve or tap with clean tissue in the other hand.



Gently insert the plug into the tap and make sure it is securely closed.

## Removal and disposal



Gently lift the top edge of the barrier, then slowly and gently peel downward.



Dispose of the pouch according to local disposal regulations.

For more information, please call our Customer Relations Center (Registered Nurses on staff) at **1-800-465-6302**, Monday through Friday, 8:00 AM to 6:00 PM (EST), or visit our Web Site at **convatec.ca**