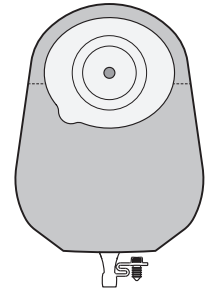


Application card

EsteemBody™

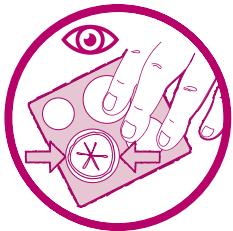
One-piece Urostomy Pouch: Application

Before and after application, wash your hands. Ensure skin surrounding the stoma is clean, dry and free from oily substances.



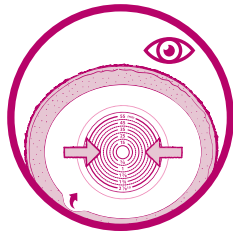
Preparation and application

1



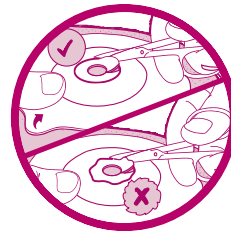
Place the stoma measuring guide over your stoma to confirm the correct size.

2



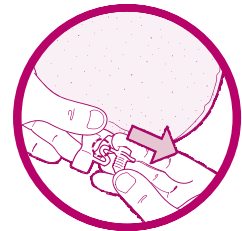
If using a pre-cut baseplate, select a baseplate with a pre-cut stoma opening slightly larger than your stoma.

3



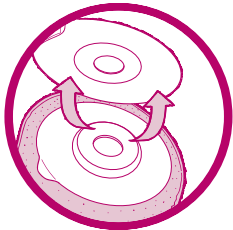
If using a cut-to-fit baseplate, transfer the size to your baseplate and cut accordingly.

4



Partially inflate the pouch by blowing and separate the pouch films to allow air to enter.

5



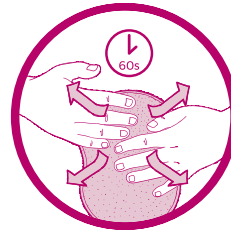
Remove baseplate release liner.

6



Hold the skin baseplate below your stoma and apply upwards against the skin around your stoma. Press baseplate against the skin.

7



Smooth onto your skin. Maintain slight pressure on the baseplate for 60 seconds to ensure a good seal. Gently insert the plug.

Scan to watch application video



For further support, call our Product Specialist team on 0800 282 254.

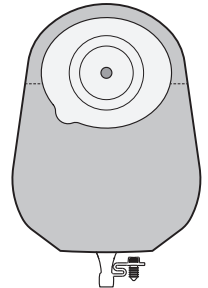
See package insert for complete instructions for use.

Application card

EsteemBody™

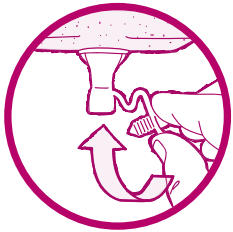
One-piece Urostomy Pouch: Emptying, Removing, Disposal

After emptying and/or disposing of your pouch, wash your hands.



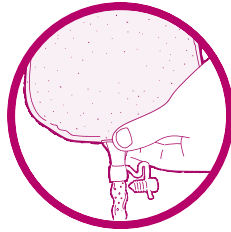
Emptying

1



Start by tilting the tap up and towards you. Squeeze the base of the tap and open the tap with the other hand.

2



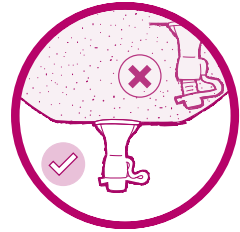
Direct the tap into the toilet to drain the urine.

3



Support the pouch with one hand, and wipe the outside of the valve or tap with clean tissue in the other hand.

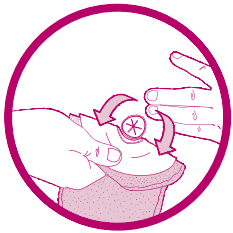
4



Gently insert the plug into the tap and make sure it is securely closed.

Removal and disposal

1



Gently lift the top edge of the baseplate, then slowly and gently peel downward.

2



Dispose of the pouch according to local disposal regulations.

Scan to watch application video (which includes night drainage instructions)



For further support, call our Product Specialist team on 0800 282 254.

See package insert for complete instructions for use.