

Application card

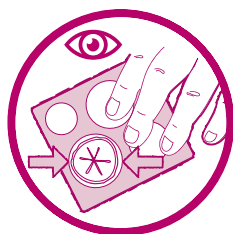
EsteemBody™

One-piece soft convex drainable pouch: Application

Before application, ensure your hands and the skin surrounding the stoma are clean, dry and free from oily substances.

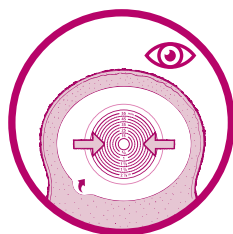
Preparation and application

1



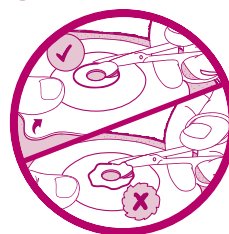
Place the stoma measuring guide over your stoma to confirm the correct size.

2



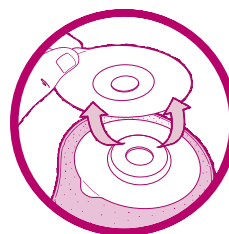
If using a pre-cut baseplate select a baseplate with a pre-cut stoma opening slightly larger than your stoma.

3



If using a cut-to-fit baseplate, transfer the size to your baseplate and cut accordingly.

4



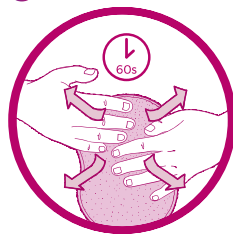
Remove baseplate release liner.

5

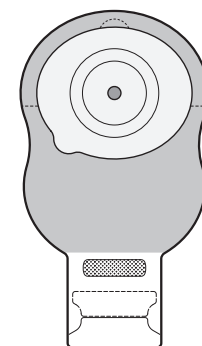


Hold the baseplate below your stoma and apply upwards against the skin around your stoma. Press the baseplate against the skin.

6



Smooth onto your skin. Maintain slight pressure on the baseplate for 60 seconds to ensure a good seal.



Scan to watch application video



For further support, call our Product Specialist team on 0800 282 254.

See package insert for complete instructions for use.

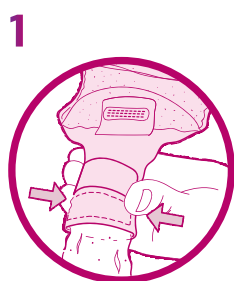
Application card

EsteemBody™

One-piece soft convex drainable pouch: Removal, Emptying, Disposal

After emptying and/or disposing of your pouch, wash your hands.

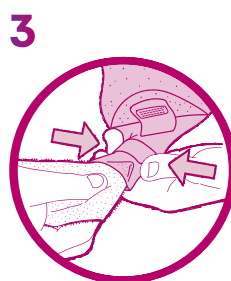
Emptying



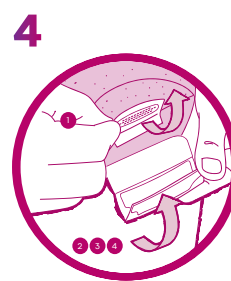
Open the tail by pushing in both ends of the outlet. Empty the contents into the toilet.



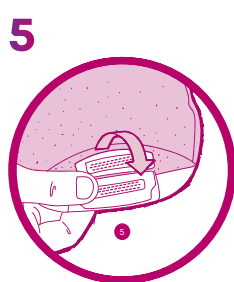
Support the pouch with one hand and wipe the tail in a firm downward motion with clean tissue.



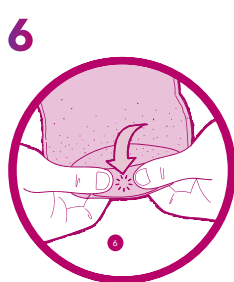
Clean the inside surface of the tail with clean tissue or wipes.



1. Fold securing strip to the up position
2. Make fold 1 in the tail closure using plastic strips as a guide
3. Repeat for fold 2
4. Repeat for fold 3



Hold tail closure whilst folding down securing strip.



Squeeze with thumb and fingers. You will feel it lock into place.



Start by gently lifting the top edge of the baseplate, then slowly and gently peel downward.



Dispose of the pouch according to local disposal regulations.

Scan to watch application video



For further support, call our Product Specialist team on 0800 282 254.

See package insert for complete instructions for use.