

Your Guide to Convexity



ESTEEM®  **portfolio**



ESTEEM®+ portfolio

The Esteem®+ portfolio offers a range of one-piece convex products with various depths to help provide comfort, freedom, security and reassurance to your patient, all designed for different stoma shapes and sizes.

From firm to flexible through to soft, we have products to suit different patients' stomas, abdomens and lifestyles whether they are post-operative, recovering at home or using the products as part of their everyday life.

Choosing the right product for your patient is very important and giving them the right type of convexity provides the comfort and reassurance that they can live a normal life.

This guide provides a summary of the Esteem®+ convex products and when to use them, however a full assessment should be carried out on all patients before deciding which product to use.

What is convexity?

Convexity is the outward curving of the baseplate or skin barrier^{1,2}. The wafer curves outwards towards the skin³. Different convexities manage the irregularities of a stoma⁴ and apply a uniform pressure to the immediate peristomal skin, improving the projection of the stoma for drainage⁵.

Convexity also helps maintain a secure seal between the pouch and the skin, therefore simplifying stoma management for patients and enhancing their quality of life.⁶

References : 1. B. S. Rolstad, « Principles and techniques in the use of convexity », *Ostomy Wound Manage*, 1996, 42(1), 24-32. 2. V. Pontieri-Lewis, « Basics of ostomy care », *Medsurg Nurs*, 2006, 15(4),199-202. 3. Wound, Ostomy and Continence Nurses Society, *Convex Pouching Systems: A Best Practice Document for Clinicians*, Mount Laurel, NJ, Wound, Ostomy, and Continence Nurses Society, 2007. 4. B. S. Rolstad, « Principles and techniques in the use of convexity », Hollister Inc., article présenté 38e congrès annuel de la WOCN Society, mise à jour 2006. 5. J. Hanley, « Convex stoma appliances: are we getting it right? », *British Journal of Nursing (Stoma Supplement)*, 2013, 22 (16). 6. E. Cronin, « A guide to the appropriate use of convex stoma care products », *Gastrointestinal nursing*, 2008, 6 (2), 12-16.

What type of convexity do I need for my patient?

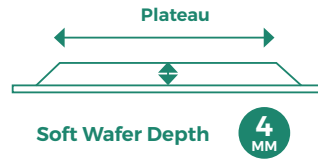
ESTEEM®+ SOFT

Firm/toned abdomen

Key benefits:

- Shallow wafer depth minimizes pressure on delicate skin
- Designed to apply minimal pressure and help conform to the body
- Suitable for use immediately post-operatively

Suited to protruding & flush stomas



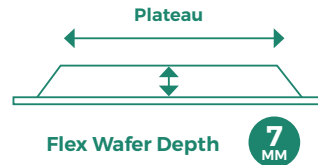
ESTEEM®+ FLEX

Skin folds & creases

Key benefits:

- Fits to the body contours for comfort and easy positioning
- Hydrocolloid skin barrier to keep the pouch firmly in place

Suited to protruding, flush & retracted stomas



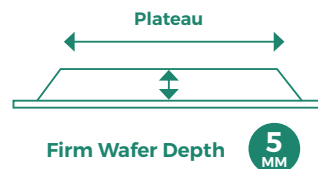
ESTEEM®+ FIRM

Soft / flaccid abdomen

Key benefits:

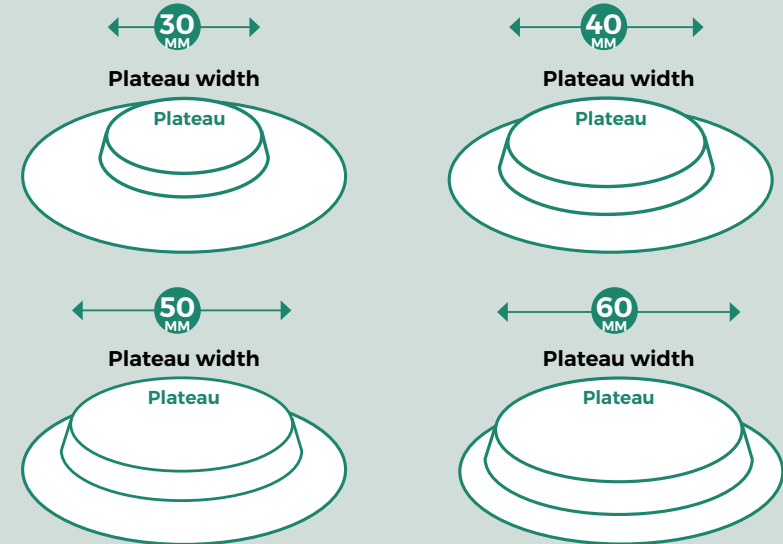
- Good seal for patients with soft flaccid abdomen
- Encourages protrusion of flush or retracted stomas

Suited to flush & retracted stomas



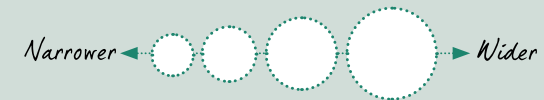
Convexity Pressure

A narrow plateau width is used to create pressure directly around the stoma



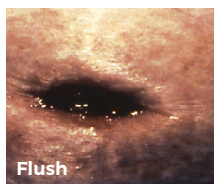
Plateau Area

A wider plateau is used to help flatten out skin creases away from the stoma



Retracted

- Pulled into the abdomen below skin level
- Little or no spout
- Highly susceptible to leaking and skin irritations



Flush

- Located at the same level as the abdomen skin surface
- Does not protrude or have a spout
- Highly susceptible to leaking and skin irritations



Skin Fold

- A stoma that is deep in a skin fold or crease, which needs to be flattened out enabling pouch attachment



Protruding

- A stoma that sticks out from the body

Esteem®+ Soft Convex

Urostomy Cut-to-fit

Product Code	Plateau Size	Cutting Range	Quantity
422551	V1 (Large)	20-47mm	10
422557	V2 (Medium)	15-40mm	10
422562	V3 (Small)	10-28mm	10

Drainable Cut-to-fit

Product Code	Plateau Size	Cutting Range	Quantity
422363	V1 (Large)	20-47mm	10
422364	V2 (Medium)	15-40mm	10
422365	V3 (Small)	10-28mm	10

Esteem®+ Flex Convex

Urostomy Cut-to-fit

Product Code	Plateau Size	Cutting Range	Quantity
421623	V1 (Large)	10-43mm	10
421626	V2 (Medium)	10-35mm	10
421628	V3 (Small)	10-25mm	10

Drainable Cut-to-fit

Product Code	Plateau Size	Cutting Range	Quantity
422159	V0 (Extra-Large)	20-57mm	10
421615	V1 (Large)	20-43mm	10
421619	V2 (Medium)	20-35mm	10
421622	V3 (Small)	20-25mm	10

Esteem®+ (Firm) Convex

Drainable Pre-cut

Product Code	Product Code	Hole Diameter	Quantity
Opaque	Transparent		
416739	416738	19mm	10
416741	416740	22mm	10
416743	416742	25mm	10
416745	416744	28mm	10
416747	416746	32mm	10
416749	416748	35mm	10
416751	416750	38mm	10



For more information, please call our Customer Relations Center (Registered Nurses on staff) at **1-800-465-6302**, Monday through Friday, 8:00 AM to 6:00 PM (EST), or visit our Web Site at www.convatec.ca