

AQUACEL[®] Foam Pro

Skin's Guardian



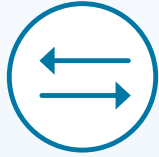
Skin's Guardians



Application Guide

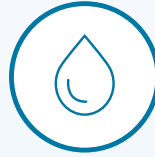
The only multi-layered silicone foam dressing powered by Hydrofiber[®] Technology.

AQUACEL® Foam Pro dressing is designed to protect the skin from breakdown caused by moisture, friction, and shear forces when used as part of a protocol of care.†



Helps protect from friction and shear

- AQUACEL® Foam Pro is a multi-layered dressing designed to help reduce the effects of shear and friction*^{o1}



Helps defend against moisture

- AQUACEL® Foam Pro dressing film provides a bacterial and viral barrier which protects the wound from external contaminants*^{1,2}
- It is water/shower proof*¹



Easy to apply

- Perforated gentle silicone adhesive layer provides secure, skin-friendly adhesion*¹
- Allows the dressing to be repositioned following skin assessment*¹



Helps maintain healthy skin microclimate

- AQUACEL® layer helps provide a healthy skin microclimate by absorbing and locking away excess moisture from the skin*^{o1,2}

With AQUACEL® Foam Pro, you can benefit from all these features:



Designed to help protect the skin from breakdown^o



Adhesive does not stick to gloves or itself^o



Easy to apply and remove^o



Water/shower proof^o



Viral and bacterial barrier^o



Maximum recommended wear time 7 days^o



Soft, gentle, flexible and conformable^o

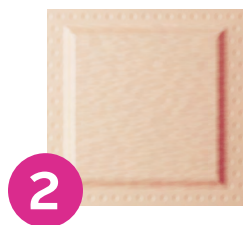
* As demonstrated in vitro ^o When used as part of a protocol of care

† Please refer to the AQUACEL® Foam Pro dressing package insert for complete Instructions for Use

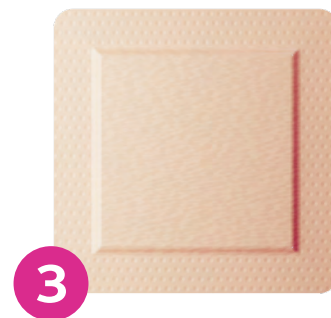
AQUACEL[®] Foam Pro dressing range comes in six sizes, to protect skin from breakdown in all areas



8cm x 8cm / 3in x 3in



10cm x 10cm / 4in x 4in



15cm x 15cm / 6in x 6in



Heel Dressing
19.8cm x 14cm / 8in x 5.5in

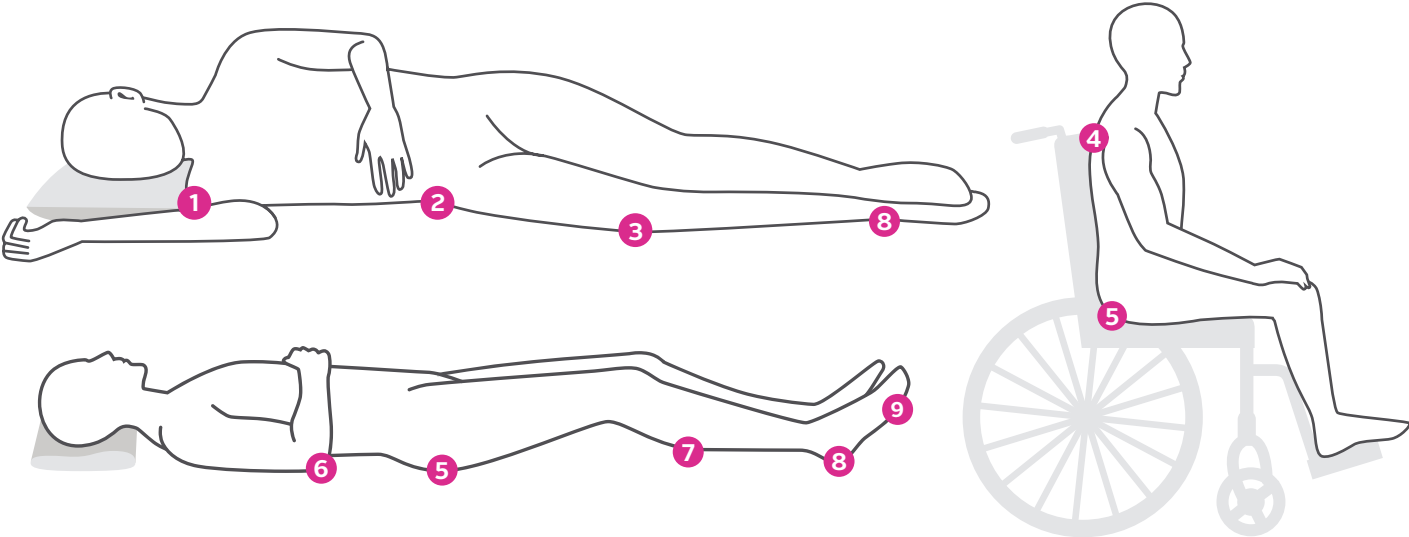


Standard Sacral Dressing
20cm x 16.9cm / 8 in x 7 in



Large Sacral Dressing
24cm x 21.5cm / 9.4 in x 8.4 in

AQUACEL® Foam Pro dressing can be used in a variety of applications

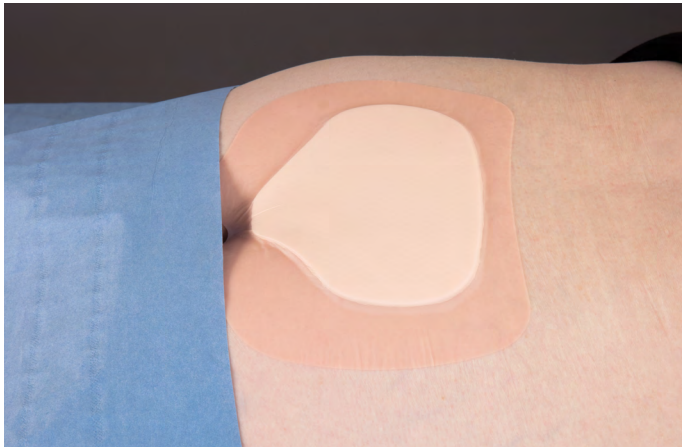


*AQUACEL® Foam Pro dressing may be used in a comprehensive protocol of care to protect against skin breakdown.

Application Guidelines*

Skin Protection

Primary Dressing



Sacral

1. Assess the area to protect, before applying the dressing.
2. Make sure to cleanse the area with appropriate cleanser and dry the skin.
3. Remove the central release liner first.
4. Holding the dressing at the edges, fold the dressing in half and place in the natal cleft.
5. Smooth the edges of the dressing.



Heel

1. Assess, clean and measure the area.
2. Working from the Achilles tendon, firmly place the dressing into position, sticking the top edge to the skin.
3. Remove the release liner as the dressing wings are pressed around the foot.
4. Fold in the edges and smooth the dressing until neat.

Application and management tips

- Apply only to intact, clean, dry skin
- Apply to patients with a Braden scale of 18 or below and if the patient CANNOT reposition themselves
- Change dressing according to hospital policy (7 day max wear time) or if stool or urine gets underneath the dressing
- Initial and date the dressing upon application
- Consult WOC/Wound Care Nurse if pressure ulcer development is suspected

For emergency department only

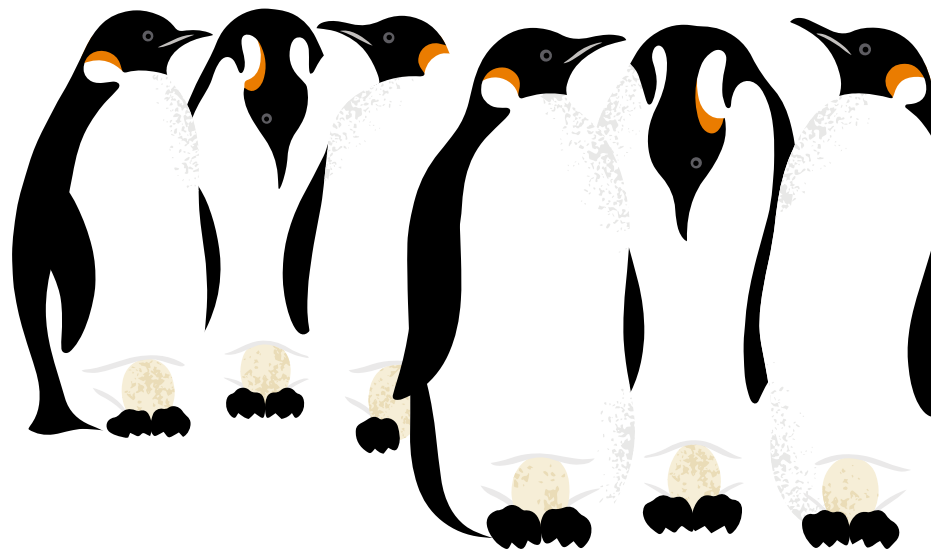
Apply if patient is admitted, but will be held in the ED for more than 4 hours and cannot relieve pressure to sacrum when on stretcher

For operating rooms only

Apply to sacrum or other at risk areas for procedures lasting 4 hours or more

Ordering information

Product code	Dressing size	Pad size	Dressings per pack
422359	8cm x 8cm / 3in x 3in	5cm x 5cm / 2in x 2in	10
422357	10cm x 10cm / 4in x 4in	6.5cm x 6.5cm / 2.5in x 2.5in	10
422358	15cm x 15cm / 6in x 6in	11cm x 11cm / 4in x 4in	10
422356	19.8cm x 14cm / 8in x 5.5in	14cm x 8.7cm / 5.5in x 3.4in	10
421579	20cm x 16.9cm / 8in x 7in	11.4cm x 13.5cm / 4.5in x 5.3in	5
421580	24cm x 21.5cm / 9.4in x 8.4in	16.4cm x 13.8cm / 6.4in x 5.4in	5



AQUACEL[®] Pro
Foam

Skin's Guardians
Protect. Defend. Nurture.

For more information, please call our Customer Relations Center (Registered Nurses on staff) at **1-800-465-6302**, Monday through Friday, 8:00 AM to 6:00 PM (EST), or visit our Web Site at **www.convatec.ca**

1. In-vitro Performance Characteristics of AQUACEL[®] Foam Pro WHRI4536MS129. 2015. Data on File. ConvaTec.
2. Walker M, Hobot JA, Newman GR, Bowler PG. Scanning electron microscopic examination of bacterial immobilisation in a carboxymethylcellulose (AQUACEL[®]) and alginate dressings. Biomaterials. 2003;24(5):883-890.