

Changing your AQUACEL® Extra dressing at home

This guide will illustrate how to safely apply AQUACEL® Extra dressing to your wound

Why do I need to change my dressing?

A dressing is designed to cover and protect an area to keep a wound clean. The dressing acts as a barrier to reduce the amount of bugs able to get into the wound that could lead to an infection.

When do I need to change my dressing?

Your dressing should be changed as per your healthcare professional's advice or if it starts to leak.



It is important that there is a dressing on the wound at all times to reduce the risk of infection



What is AQUACEL® Extra dressing?

AQUACEL® Extra is a wound contact layer dressing (in direct contact with the wound). The dressing will form a soft gel, this is normal, and will help to absorb wound leakage as well as keep your wound clean and support the healing process.



ConvaTec

Before changing your dressing

1. Hand hygiene



Wash hands with soap and water and dry thoroughly with a clean towel

2. Gather all needed equipment as required



Clean disposable gloves



Mirror to view wound, if necessary



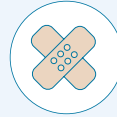
Adhesive remover, if necessary



Disposable plastic bag for used dressings



Wound cleanser or clean tap water



Dressing



Moisturisers, if necessary



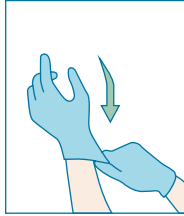
Tape and clean scissors

3. Removal and disposal of previous dressing



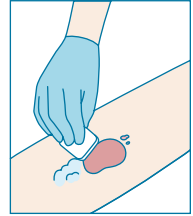
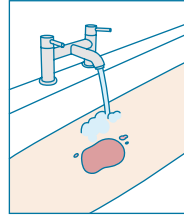
With clean, gloved hands remove dressing and dispose in a plastic bag

Application



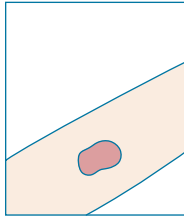
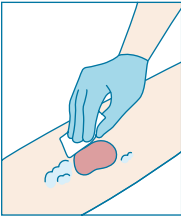
1 Wash hands

Wash hands with soap and water and dry thoroughly with a clean towel. Then apply clean gloves.



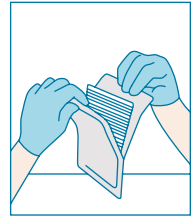
2 Cleanse wound

Cleanse your wound with clean water or specific wound cleansing product if advised by your healthcare professional.



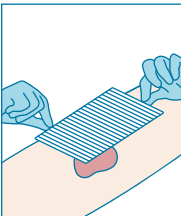
3 Dry the skin

Ensure the skin around the wound edge is clean and dry.



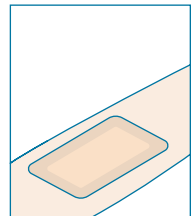
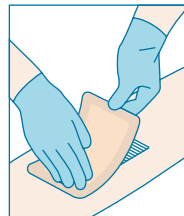
4 Open dressing

Repeat step 1. Carefully open AQUACEL® Extra dressing packaging trying to minimise touching the dressing as much as possible.



5 Apply dressing

Apply AQUACEL® Extra dressing directly to the wound. Ensure the dressing overlaps the wound edges by at least 1cm, cut if needed.



6 Secure dressing

Apply a cover dressing to secure AQUACEL® Extra dressing in place per healthcare professional guidance.

For additional guidance please refer to the instructions for use leaflet in the box. To be used following the advice of a healthcare professional.



If you have any of the following signs or symptoms, contact your healthcare professional

- New or increasing size of wound
- New or spreading redness or swelling of the skin around the wound edge
- New or increasing pain
- New or increase of smell after cleansing of wound
- More wound leakage than usual



Precautions/Warnings

- Each dressing should not be left in place for more than 7 days
- If you find the dressing difficult to remove, soak the dressing with sterile saline or clean water
- Do not use if individual dressing package is open or damaged
- Store at room temperature and in a dry place

For additional guidance on indications and precautions please refer to the instructions for use leaflet in the box.

Please refer to the below code table to ensure you receive the correct dressing

AQUACEL[®] Extra[™]

Dressing Size	Pack size	Product Code
AQUACEL[®] Extra[™] Dressings		
5cm x 5cm (2" x 2")	10	420671
10cm x 10cm (4" x 4")	10	420672
15cm x 15cm (6" x 6")	5	420673
AQUACEL[®] Ribbon Dressing		
1cm x 45cm (0.39" x 18")	5	420127
2cm x 45cm (3/4" x 18")	5	403770

Here to help

This brochure has been designed to help you understand how to apply and remove your dressing safely and correctly. Should you need additional advice:

For more information, please call our Customer Relations Center (Registered Nurses on staff) at **1-800-465-6302**, Monday through Friday, 8:00 AM to 6:00 PM (EST), or visit our Web Site at **www.convatec.ca**