

Directions: Complete Steps 1 through 6 to Determine Product Needs - If Questions or Assistance Needed With Sizing, Contact Your Ostomy Expert

Step 1:

Remove Pouch & Cleanse

Instruction: Clean skin with water and pat dry



Caution:

- Gently push skin away from the barrier.
- DO NOT use soap, lotions, wipes as they may leave a residue.

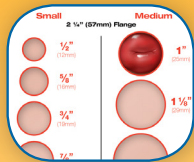
Instruction: If patient has adhesive residue on skin, please remove residue with Adhesive Remover Wipe.



Step 2:

Measure Stoma

Instruction: Measure the stoma to determine correct pouching size



For anything over 2 3/4", use 4"

Small:

1/2" (12 mm)

5/8" (16 mm)

3/4" (19 mm)

7/8" (22 mm)

Medium:

1" (25 mm)

1 1/8" (29 mm)

1 1/4" (33 mm)

Large:

1 3/8" (35 mm)

1 1/2" (38 mm)

1 5/8" (41 mm)

1 3/4" (45 mm)

If stoma measures over 1 3/4" then use a 4" appliance

Greater than 2 1/8" switch to an alternative ConvaTec cut-to-fit pouching system with Stomahesive® Paste

Step 3:

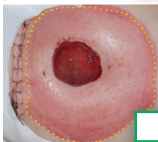
Assess Skin, Document L and T



L0 Healthy Skin

Skin around stoma looks as healthy as skin elsewhere

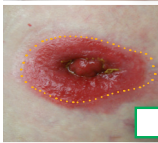
☒ YES Skip (T) below, go to step 4



L1 Hyperemic Lesion

Peristomal redness with intact skin

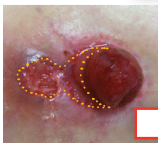
☒ YES



L2 Erosive Lesion

Open lesion not extending into subcutaneous tissue; partial-thickness skin loss

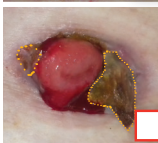
☒ YES



L3 Ulcerative Lesion

Open lesion extending into subcutaneous tissue and below; full-thickness skin loss

☒ YES ! REFER to Ostomy Expert for consult



L4 Ulcerative Lesion

Full-thickness skin loss with non-viable, dead tissue (necrotic, fibrinous)

☒ YES ! REFER to Ostomy Expert for consult



LX Proliferative Lesion

Abnormal growths present (ie, hyperplasia, granulomas, neoplasms)

☒ YES ! REFER to Ostomy Expert for consult

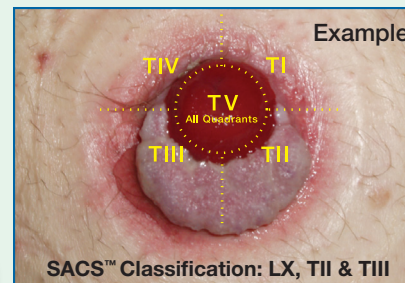


Topographical Location (T)

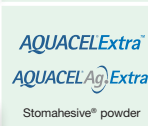
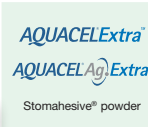
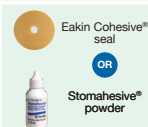
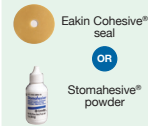
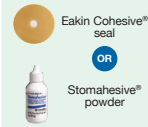
TI ☐
TII ☐
TIII ☐
TIV ☐
TV ☐

Additional Lesion
L ____ ; T ____

Patient's Head



Patient's Feet



Step 4:

Assess Stoma Types, Document



Flush

• Caution: Do not use a convex skin barrier if surgery within past 10 days

☒ YES

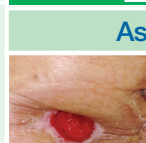


Narrow Oval

• Instruction: Protect exposed skin not covered by adhesive barrier

☒ YES

☒ None of the Above



Assess Pouching Surface, Document

Soft & Flaccid Abdomen

• Consider: For greater flexibility, consider a ConvaTec 1-piece system with Stomahesive® Paste.

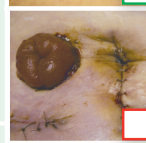
☒ YES



Stoma in Crease or Skin Fold

• Consider: For greater flexibility, consider a ConvaTec 1-piece system. Stomahesive® Paste optional.

☒ YES

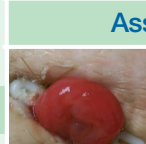


Pouching Area Near Incision

• Instruction: Ensure a secure seal to avoid stoma output contacting incision.
• Contact Ostomy Expert for recommendations

☒ YES ! REFER to Ostomy Expert for consult

☒ None of the Above



Rod or Bridge Device Present

• Instruction: Create a flat pouching surface with Eakin® Cohesive Seal. Pouch over rigid rod.
• Caution: Do not dislodge rod.
• Consider: If rod is sutured and skin is red, apply Stomahesive® powder to suture area and dab with Sensi-Care® Sting Free barrier wipe.

☒ YES



Flexible Rod Present

• Instruction: For flexible rod, pouch under rods. Ensure exposed skin is protected by using Eakin Cohesive® seal.

☒ YES



Stents Present

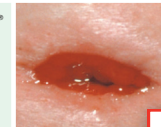
• Instruction: Thread stents into pouch.
• Caution: Use caution not to pinch stents between pouch and skin barrier.

☒ YES

☒ None of the Above

Step 5:

Assess Stoma Complications, Document



Retracted Stoma

• Caution: Do not use a convex skin barrier if surgery within past 10 days

☒ YES REFER to Ostomy Expert if there is significant change in stoma color



Hernia

• Consider: If greater flexibility is needed or if concerned that flange may cause pressure, consider a ConvaTec 1-piece system with Stomahesive® Paste.

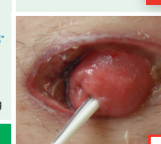
☒ YES ! REFER to Ostomy Expert for consult



Stomal Prolapse

• Caution: Use caution to avoid pinching stoma when applying a 2-piece system.
• Consider: To accommodate the prolapse consider a ConvaTec 1-piece system with either Stomahesive® Paste or an Eakin Cohesive® seal

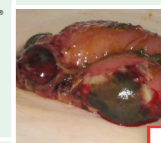
☒ YES ! REFER to Ostomy Expert for consult



Mucocutaneous Separation

• Instruction: Cleanse area, apply Stomahesive® powder and loosely fill separation with Eakin Cohesive® seal

☒ YES ! REFER to Ostomy Expert for consult



Dark Stoma Color

• Consider: Adjust skin barrier opening larger than stoma measurement. This may require switching to a ConvaTec 1-piece system with Stomahesive® Paste.

☒ YES ! Immediate referral to Ostomy Expert, possible stoma necrosis

☒ None of the Above

Disclaimer: This guide is not a replacement for expert opinion or consultation for an ostomy condition or for expert verification of appropriate product use or application. Consult a Ostomy Expert or other expert if you have questions or concerns about how to care for your ostomy patient.

Step 6:		Accessory Tips		Additional Tips		Ordering Codes				
Apply 2-Piece Formulary System		<div><div><div><div><div></div><div></div></div><div>Urine</div><div><ul style="list-style-type: none">• Apply ConvaTec Moldable Technology™ skin barrier and pouch.<div><div><div></div><div></div></div><div>Natura® Urostomy Pouch</div></div></div></div><div><div>OR</div></div><div><div><div><div><div></div><div></div></div><div>Stool</div><div><ul style="list-style-type: none">• Apply ConvaTec Moldable Technology™ skin barrier and pouch.<div><div><div></div><div></div></div><div>Natura® Invisiclose® Drainable Pouch</div></div></div></div></div></div></div></div>		<div><div><div><div><div></div><div></div></div><div>Eakin Cohesive® Seals</div><div><ul style="list-style-type: none">• For covering exposed skin around the stoma or to fill in creases, mold the Eakin Cohesive® Seal to desired shape and apply to skin.• No alcohol. Sting free.• For light convexity apply Eakin Cohesive® Seal to back of skin barrier.</div></div><div><div></div><div></div></div></div></div>		<div><div><div><div><div></div><div></div></div><div>Leak at Barrier</div><div><ul style="list-style-type: none">• Repeat steps 1 - 6• Make sure to follow proper accessory and system application• Add belt</div><div><div></div><div>REFER to Ostomy Expert</div></div></div></div><div><div><div><div><div></div><div></div></div><div>Odor</div><div><ul style="list-style-type: none">• Check pouch connection: clean or re-snap pouch to barrier connection• Clean drainable tail area• Check for leaks at barrier site</div></div></div><div><div><div><div><div></div><div></div></div><div>Stoma Producing High Volume of Liquid Output</div><div><ul style="list-style-type: none">• Replace standard pouch with transparent high output pouch.• If spout drain is not desired, cut off spout ending and use clamp supplied in the box.</div><div><div></div></div></div></div><div><div><div><div><div></div><div></div></div><div>Post-op Tenderness</div><div><div><div></div></div><div><ul style="list-style-type: none">• Apply a 2-piece Natura® pouch system with accordion flange</div></div></div></div></div></div></div></div>		PLEASE CONTACT YOUR OSTOMY EXPERT FOR ADDITIONAL PRODUCT SIZES.		
Apply Alternative 1-Piece Formulary System		<div><div><div><div><div></div><div></div></div><div>Urine</div></div><div><div><div><div><div></div><div></div></div><div>Stool</div></div></div></div></div></div>		<div><div><div><div><div></div><div></div></div><div>Stomahesive® Paste</div><div><ul style="list-style-type: none">• For evening out pouching surface• If using a cut-to-fit barrier, cut 1/8 inch larger than stoma and apply Stomahesive® Paste like caulk around adhesive opening.• Contains alcohol.</div></div><div><div></div><div></div></div></div></div> <div><div><div><div><div></div><div></div></div><div>Stomahesive® Powder For Crusting Technique</div><div><ul style="list-style-type: none">• Apply powder to skin.• Fan off excess powder.</div></div><div><div></div><div></div></div></div></div>		Discharge Support				
ConvaTec Moldable Technology™ Application		<div><div><div><div><div></div><div></div></div><div>Getting the Right Fit</div><div><ul style="list-style-type: none">• Place your thumbs (or fingers) at the center of the starter hole and roll the adhesive back. Do not stretch or pull the adhesive to make it bigger, roll it.• Once you have created an opening the shape and size of the stoma, gently press the rolled adhesive down on itself to hold that shape.</div></div></div><div><div><div><div><div></div><div></div></div><div>Applying the Skin Barrier to the Skin</div><div><ul style="list-style-type: none">• Remove the clear release liner from the back and center the opening over stoma.• Press the skin barrier into place and re-adjust the rolled adhesive to create a snug fit.• Hold the adhesive in place for 30 seconds to secure optimal seal. REMEMBER: Roll the Adhesive Out• Mold wafer by rolling out, slightly larger than the stoma</div></div></div><div><div><div><div><div></div><div></div></div><div>Applying the White Tape Border</div><div><ul style="list-style-type: none">• Peel off the white release paper from the Tape Border and press gently against skin, smoothing out any wrinkles.</div></div></div></div></div></div>		<div><div><div><div><div></div><div></div></div><div>Note: Fill any shallow wound defect lightly with Stomahesive® powder, or AQUACEL Extra, or AQUACEL Ag Extra and apply AQUACEL Foam cover dressing or Eakin Cohesive® Seal if needed.</div></div><div><div><div><div>1. Beitz J. et al. Content validation of a standardized algorithm for ostomy care. Ostomy Wound Manage. 2010.</div><div>2. Data on File. Construct Validation of an Innovative, Standardized, Interactive Digital Algorithm for Ostomy Care.</div></div><div>Reproduction or modification of this content is a copyright violation. ®/™ indicates trademarks of ConvaTec Inc. ©2014 ConvaTec Inc. AP-013588-US Printed in U.S.A. 2 /1/2015</div><div><div>ConvaTec</div><div></div></div></div></div></div></div>		Contact your Concierge Specialist to coordinate home delivery of product samples, insurance support and ostomy education for your patient				
		<div><div><div><div><div></div><div></div></div><div>Night Time</div><div><ul style="list-style-type: none">• Urostomy - Connect urostomy pouch to night time drainage system• Ileostomy - Replace pouch with high output pouch if large volume of watery output is anticipated</div></div></div><div><div><div><div></div><div></div></div><div>Consulting the Expert</div></div></div></div>		<div><div><div><div><div></div><div></div></div><div>CALL XXX XXX-XXXX Option X FAX XXX XXX-XXXX</div></div><div><div><div><div></div><div></div></div><div>YES Contact with Concierge Specialist was completed; product was ordered.</div><div>NO Patient still recovering. Contact and product samples have not yet been completed.</div></div></div></div></div>						
		<div><div><div><div></div><div></div></div><div>Your Concierge Specialist can also support any clinical needs regarding your patient's ostomy care.</div></div></div>								