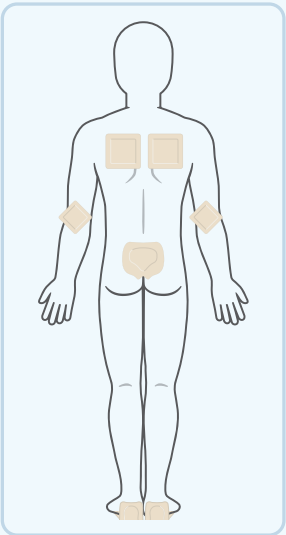




Skin Protection During Patient Positioning

DRESSING APPLICATION GUIDE¹⁻⁴



Supine Position

Guidelines for Head, Torso and Lower Body Dressing Use:

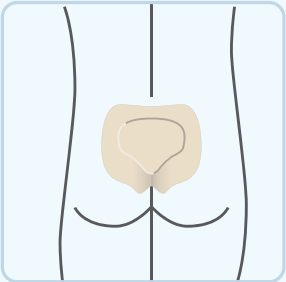
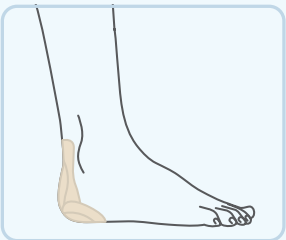
- Elbows: 4x4 (2)
- Scapulae: 6x6 (2)
- Sacrum: Sacral (1)
- Heels: Heel (2)

Heel Dressing

1. Peel back one side of the clear liner and remove. Centering the dressing over the heel, attach the dressing upper adhesive border to the skin on one side of the Achilles tendon area.
2. Remove the other half of the clear liner and secure the other side of the upper dressing to the skin.
3. Fold the dressing over the bottom of the heel, and accommodating for the heel curvature, attach and smooth down the adhesive border along the edges.

Sacrum Dressing

1. Remove the central release liner first; holding the dressing at its edges, fold it in half with the non-adhesive sides touching.
2. Place the inside fold into the natal cleft.
3. Remove the dressing liner on the side closest to you and smooth down the adhesive borders of the dressing.
4. Remove the remaining dressing liner, pulling it away, and attach the remaining adhesive border of the dressing onto the patient's skin.
5. Gently smooth down the adhesive edges, removing any wrinkles.



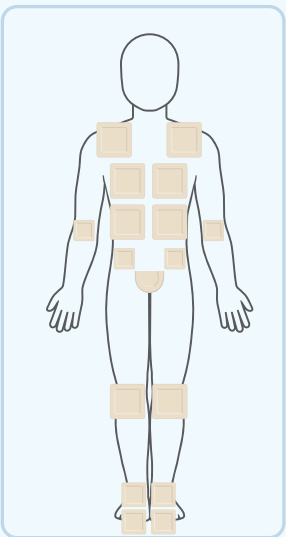
Supine Position Dressing Count

AQUACEL®FoamPro
Skin's Guardian

Product Code	Dressing Size	Quantity
422357	4" X 4" (10cm X 10cm)	2
422358	6" X 6" (15cm X 15cm)	2
421580	9.4" X 8.4" (24cm X 21.5cm) Large Sacral	1
422356	8" X 5.5" (19.8cm X 14 cm) Heel	2

AQUACEL®Foam
Skin's Guardian

Product Code	Dressing Size	Quantity
420680	4" X 4" (10cm X 10cm)	2
422350	6" X 6" (15cm X 15cm)	2
420828	9.4" X 8.4" (24cm X 21.5cm) Large Sacral	1
420625	8" X 5.5" (19.8cm X 14 cm) Heel	2



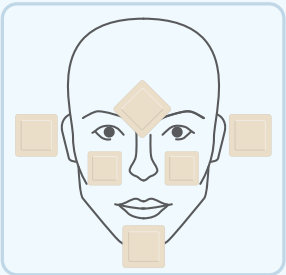
Prone Position

Guidelines for Torso and Lower Body Dressing Use:

- Elbows: 4x4 (2)
- Clavicles/Shoulders: 6x6 (2)
- Chest/Breasts: 6x6 (2)
- Genitalia/Penis: Sacral (1)
- Iliac Crests: 4x4 (2)
- Ribs: 6x6 (2)
- Knees: 6x6 (2)
- Dorsal Feet: 4x4 (2)
- Toes: 4x4 (2)

Guidelines for Head Dressing Use

- Forehead /Bridge of Nose: 4x4 (1) quarter turn
- Cheeks: 3x3 (2)
- Chin: 4x4 (1)
- Ears: 4x4 (2)



Prone Position Dressing Count

AQUACEL®FoamPro
Skin's Guardian

Product Code	Dressing Size	Quantity
422359	3" X 3" (8cm X 8cm)	2
422357	4" X 4" (10cm X 10cm)	12
422358	6" X 6" (15cm X 15cm)	8
421580	9.4" X 8.4" (24cm X 21.5cm) Large Sacral	1

AQUACEL®Foam
Skin's Guardian

Product Code	Dressing Size	Quantity
420804	3" X 3" (8cm X 8cm)	2
420680	4" X 4" (10cm X 10cm)	12
422350	6" X 6" (15cm X 15cm)	8
420828	9.4" X 8.4" (24cm X 21.5cm) Large Sacral	1

To find out more about AQUACEL® Foam dressings or to arrange a visit from your local ConvaTec representative: **Call 1-800-422-8811 or visit convatec.com**



ConvaTec

Advanced Wound Care