

# Neria™Soft infusion set



The **Neria™Soft** infusion set is a soft cannula infusion set with a variable insertion angle. The Neria™Soft infusion set can be disconnected at the insertion site and a transparent window makes it possible to see the point of insertion.

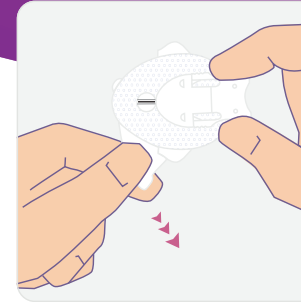
## Product specifications

<b>Cannula</b>	Soft
<b>Insertion angle</b>	20-45 degrees (variable angle)
<b>Disconnection</b>	Yes, at site
<b>Introducer needle gauge</b>	G27
<b>Cannula diameter</b>	0.68 mm
<b>Adhesive</b>	Built-in, non-woven polyester, acrylic adhesive

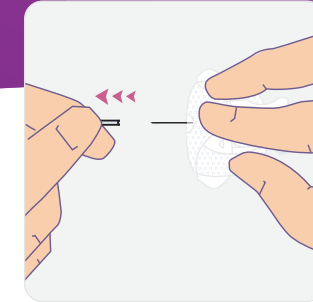
Soft cannula lengths	Tubing lengths	Priming volumes
13 and 17 mm	30, 60, 80 and 110 cm	30 cm ~ 0.07 ml 60 cm ~ 0.11 ml 80 cm ~ 0.13 ml 110 cm ~ 0.17 ml

The Neria™Soft infusion sets are sold in boxes containing 10 sets.

# Neria™Soft infusion set user steps



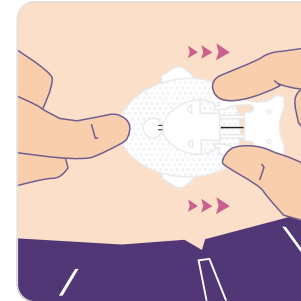
**Step 1.**  
Pull gently to remove the paper from the adhesive, being careful not to touch the adhesive.



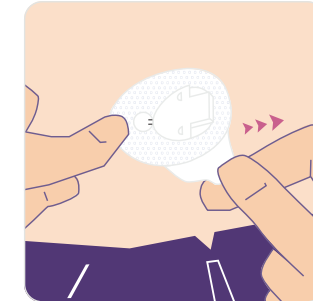
**Step 2.**  
Gently twist and pull to remove the needle guard.



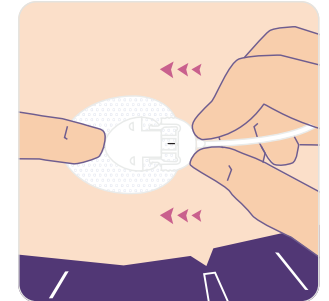
**Step 3.**  
Pinch the skin with one hand and insert the Neria™Soft infusion set at a 20-45 degree angle.



**Step 4.**  
Remove the introducer needle.



**Step 5.**  
Remove the remaining adhesive backing paper, and press the adhesive onto the skin to secure.



**Step 6.**  
Prime tubing according to pump manufacturer's instructions for use. Insert the connector needle to connect the tubing. Check the infusion site frequently.

## DISCLAIMER

Please note that this guide only illustrates some of the steps to follow when inserting a Neria™Soft infusion set and it is not a substitute for reading the full instructions for use that comes with the product. When using the product for the first time, do so in the presence of your healthcare professional.

AP-68005-GBL-ENG-v1 (v1.0)

© 2024 Convatec

Neria is a trademark of Unomedical A/S. The Convatec name, Hug icon and strapline are trademarks of Convatec.