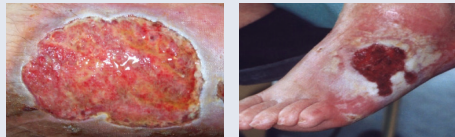


Moisture imbalance can hamper wound healing

Superabsorber dressings are designed to absorb and lock in exudate in wounds with high exudate levels. These features promote wound healing and contribute to prevention of further skin breakdown.

ConvaMax™ is a new superabsorber dressing designed to manage the clinical challenges presented by highly exuding wounds.

Excess exudate can compromise skin integrity and delay or prevent wound healing.



Images used with kind permission from respective owner.

Exudate Managed. Skin Protected.

ConvaMax™ Superabsorber combines high absorption and retention when you need it most to help reduce excess exudate and protect skin integrity.¹

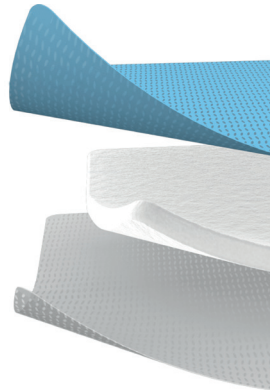
 **High absorbency***

 **High retention***

 **Works under pressure***

 **Protease modulation promotes healing*²**

 **Soft and conformable***



*In-Vitro Performance Characteristics of ConvaMax™, WHRI6045 MS161, Data on file, ConvaTec. 1. World Union of Wound Healing Societies (2007) Principles of best practice: wound exudate and the role of dressings. A consensus document. London: MEP Ltd. Available at: www.woundsinternational.com. 2. Cutting KF, White R (2002) Maceration of the skin and wound bed: its nature and causes. J Wound Care 11(7): 275–8.

Dressing Size		Pack size	Product Code
ConvaMax™ Superabsorber Non-adhesive			
7.5cm x 7.5cm	3.0in x 3.0in	10	422566
10cm x 10cm	3.9in x 3.9in	10	422567
10cm x 20cm	3.9in x 7.9in	10	422568
12.5cm x 12.5cm	4.9in x 4.9in	10	422569
15cm x 15cm	5.9in x 5.9in	10	422570
15cm x 20cm	5.9in x 7.9in	10	422571
20cm x 20cm	7.9in x 7.9in	10	422572
20cm x 30cm	7.9in x 11.8in	10	422573
20cm x 40cm	7.9in x 15.7in	10	422574
ConvaMax™ Superabsorber Adhesive			
7.5cm x 7.5cm	3.0in x 3.0in	10	422575
10cm x 10cm	3.9in x 3.9in	10	422576
10cm x 20cm	3.9in x 7.9in	10	422577
15cm x 15cm	5.9in x 5.9in	10	422579
15cm x 20cm	5.9in x 7.9in	10	422580
20cm x 20cm	7.9in x 7.9in	10	422581

To find out more call: **XXXX XXX XXX**

or email: **XXXXXXXXXX**

www.convatec.com

ConvaTec, the ConvaTec logo and ConvaMax are trademarks or registered trademarks or copyrighted materials of ConvaTec Inc. 2020 all rights reserved. AP-O31187-EM



Your guide to
ConvaMax™ Superabsorber

**Exudate Managed.
Skin Protected.**

 **ConvaTec**

Protocol of Care

1. Assess

Assess the patient, wound, peri-wound skin and exudate.



2. Manage

Determine whether ConvaMax™ Superabsorber will be applied as a primary or secondary dressing and whether silicone adhesive or non-adhesive.



3. Monitor

Reassess the wound at each dressing change.



Assess

→ Patient

Conduct a comprehensive patient assessment, including their medical history, comorbidities and wound etiology.

→ Wound

Depth: partial or full thickness?
What tissue type (s) present?
Wound edges: open or closed (epibole); undermining present?

→ Peri-wound skin

Is it healthy? Dry? Macerated? Excoriated?

→ Wound exudate level

Is wound exudate minimal, moderate, or heavy?
Consider wound exudate colour and consistency.

ConvaMax™
SUPERABSORBER

Manage

Use ConvaMax™ Superabsorber Adhesive as a primary dressing for:

- Shallow wounds, e.g. superficial, partial thickness venous leg ulcer or diabetic foot ulcer
- Wounds with fragile peri-wound skin liable to tear
- Weeping oedema, which may cause skin compromise
- Wounds likely to bleed on removal of non-silicone dressing e.g. fungating wounds

Use ConvaMax™ Superabsorber Non-adhesive as a primary or secondary dressing for:

Primary dressing

- Patients with a silicone allergy

Secondary dressing

Deeper wounds require a primary dressing*, e.g., full-thickness wounds, wounds with a cavity or sinus

- Wounds with macerated peri-wound skin
- Both ConvaMax™ Adhesive and Non-adhesive dressings should be secured with a fixation dressing (e.g., tape, stockinette, or retention bandage) or compression bandaging.

For additional guidance, please refer to the instructions for use leaflet in the box. To be used following the advice of a healthcare professional.

*ConvaMax™ can be used as a secondary dressing in combination with AQUACEL® Extra, AQUACEL® Ribbon and AQUACEL® Ag Advantage / Ag+

Monitor

Reassess the wound at each dressing change. ConvaMax™ Superabsorber dressing should be changed depending on dressing saturation and each dressing should not stay in-situ for more than 7 days.

As wound healing progresses and exudate level drops, a switch to AQUACEL® Foam or AQUACEL® Foam Pro should be considered.

Tips for success

ConvaMax™ Superabsorber Adhesive Dressing

Gentle dressing adhesion may facilitate dressing changes and prevent dressing slippage under bandages. Protects fragile skin and is gentle to remove.

ConvaMax™ Superabsorber Non-adhesive Dressing

Dressing must be in close contact with the wound bed to ensure wound fluid is absorbed.

Dressing size

Both dressings come in a large range of sizes, and should be selected according to wound size and fluid handling requirements. The appropriate size dressing is selected to allow for sufficient space to the wound edge.